

# AGENDA

**Meeting:** Devizes Area Board  
**Place:** [Online Meeting](#)  
**Date:** Monday 15 March 2021  
**Time:** 6.30 pm

---

Including the Parishes of: All Cannings, Bishops Cannings, Bromham, Cheverell Magna, Cheverell Parva, Devizes, Easterton, Erlestoke, Etchilhampton, Market Lavington, Marston, Potterne, Roundway, Rowde, Stert, Urchfont, West Lavington and Worton.

---

**The Area Board welcomes and invites contributions from members of the public in this online meeting.**

**[To join the meeting and be able to enter in the discussion, please use this link](#)**

**[Guidance on how to access this meeting online is available here](#)**

All the papers connected with this meeting are available on the Council's website at [www.wiltshire.gov.uk](http://www.wiltshire.gov.uk)

Press enquiries to Communications on direct lines (01225) 713114 / 713115

**[Anyone who wishes to watch the meeting only can do so via this link – recording available for 6 months.](#)**

---

Please direct any enquiries on this Agenda to Tara Shannon, Senior Democratic Services Officer, direct line 01225 718352 or email [tara.shannon@wiltshire.gov.uk](mailto:tara.shannon@wiltshire.gov.uk)

---

## Wiltshire Councillors

CLlr Anna Cuthbert, Bromham, Rowde and Potterne  
CLlr Peter Evans, Devizes East  
CLlr Sue Evans, Devizes North  
CLlr Richard Gamble, The Lavingtons and Erlestoke  
CLlr Simon Jacobs, Devizes and Roundway South (Chairman)  
CLlr Laura Mayes, Roundway (Vice-Chair)  
CLlr Philip Whitehead, Urchfont and the Cannings

## **Recording and Broadcasting Information**

Wiltshire Council may record this meeting for live and/or subsequent broadcast. At the start of the meeting, the Chairman will confirm if all or part of the meeting is being recorded. The images and sound recordings may also be used for training purposes within the Council.

By submitting a statement or question for an online meeting you are consenting that you will be recorded presenting this, or this may be presented by an officer during the meeting, and will be available on the public record. The meeting may also be recorded by the press or members of the public.

Any person or organisation choosing to film, record or broadcast any meeting of the Council, its Cabinet or committees is responsible for any claims or other liability resulting from them so doing and by choosing to film, record or broadcast proceedings they accept that they are required to indemnify the Council, its members and officers in relation to any such claims or liabilities.

Details of the Council's Guidance on the Recording and Webcasting of Meetings is available on request. Our privacy policy can be found [here](#).

	Time
<p>1 <b>Welcome</b></p> <p>To welcome those present to the meeting.</p>	6.30pm
<p>2 <b>Apologies for Absence</b></p> <p>To receive any apologies for absence.</p>	
<p>3 <b>Minutes</b> (<i>Pages 1 - 14</i>)</p> <p>To approve and sign as a correct record the minutes of the meeting held on 11 January 2021.</p>	
<p>4 <b>Declarations of Interest</b></p> <p>To receive any declarations of disclosable interests or dispensations granted by the Standards Committee.</p>	
<p>5 <b>Chairman's Announcements</b> (<i>Pages 15 - 24</i>)</p> <p>To receive the following announcements through the Chairman:</p> <ul style="list-style-type: none"> <li>• <b>COVID-19 Update</b> Please follow the regulations and stay at home wherever possible. An update on targeted COVID-19 community testing for asymptomatic people is included in the agenda pack.</li> <li>• <b>Census 2021</b> Census day will be on March 21 and households can take part online. See <a href="https://census.gov.uk/">https://census.gov.uk/</a> for more information.</li> <li>• <b>Last Area Board before the May elections!</b> A big thank you to all Members, officers, partners, community members and residents that have been involved in the last 4 years.</li> <li>• <b>Fostering in Wiltshire</b> We are currently seeking to recruit 100 new foster carers over three years so that our children can continue to live in their local communities, within Wiltshire. To become a foster carer, people need to be over 21 years of age and have a spare bedroom. More details are available on the fostering website: <a href="http://www.fosteringwiltshire.uk">www.fosteringwiltshire.uk</a>.</li> <li>• <b>Wiltshire Independent Visitor Scheme</b> The Wiltshire Independent Visitor Scheme provides independent befriending support to children in the care of Wiltshire Council. Our volunteer Independent Visitors (IVs) play a really important role, visiting the young person they</li> </ul>	6.35pm

are “matched” with regularly, listening to them and taking an interest in their lives. They offer consistency, and quality, fun, one to one time. IVs make a long-term commitment to support a young person until they leave the care system, and often beyond this time. If you would be interested in becoming an Independent Visitor please visit <https://www.wiltshire.gov.uk/children-young-people-independent-visitor-scheme>.

- **Become a Councillor**

Would you be interested in becoming a councillor? There are further details in the agenda pack or see [Becoming a councillor - Wiltshire Council](#) for further information.

6 **Partner Updates (Pages 25 - 36)** **6.45pm**

To receive updates from the following partners:

- Wiltshire Police
- Dorset and Wiltshire Fire and Rescue Service
- Schools updates
- Healthwatch Wiltshire
- CCG B&ANES, Swindon and Wiltshire
  - Including update on the medical centre.
- Town and Parish Councils
- Devizes indies

7 **Wiltshire CIL - Community Connector Work** **7.15pm**

To receive an update from Nicola Harris of Wiltshire CIL on their Community Connector Work.

8 **Community Status Report** **7.20pm**

To receive an update on the Community Status Report from Andrew Jack, Community Engagement Manager.

Report to follow.

9 **Devizes Gateway Station** **7.25pm**

To receive an update from Tamara Reay and Noel Woolrych on the Devizes Gateway Station project including survey results and an update on the business case.

10 **Air Quality (Pages 37 - 40)** **7.30pm**

To receive any updates from the Devizes Air Quality and Transport Strategy Group.

11	<p><b>Petition regarding B3098 changes within Market Lavington for Public Safety</b></p> <p>To receive a petition - 'B3098 (Church and High Street) changes within Market Lavington for Public Safety'.</p> <p>View the online petition here: <a href="#">ePetition - B3098 (Church and High Street) changes within Market Lavington for Public Safety   Wiltshire Council</a>.</p>	7.35pm
12	<p><b>Community Area Transport Group (CATG) (Pages 41 - 56)</b></p> <p>To consider the update and any recommendations arising from the Community Area Transport Group (CATG).</p>	7.45pm
13	<p><b>Youth Updates</b></p> <p>To receive any updates on youth work in the Devizes Community Area and consider the following applications for youth grant funding:</p> <ul style="list-style-type: none"> <li>• Wiltshire Youth for Christ, £5,000.00 towards a new youth worker for the Devizes Area.</li> <li>• The Bridge Project, £5,000.00 towards a Thrive hub worker in two Devizes Schools.</li> <li>• Potterne Youth Club, £2,700.00 towards the Potterne Community Garden Re-Generation.</li> <li>• Area Board Initiative, Devizes School, £4,700.00 towards supporting students returning to school.</li> <li>• Area Board Initiative, Lavington School, £4,700.00 towards supporting students returning to school.</li> </ul> <p>Further details for the youth grant applications can be found in the grant report at agenda item 16.</p>	7.50pm
14	<p><b>Health and Wellbeing Group</b></p> <p>To receive an update on the Devizes Health and Wellbeing Group and consider the following applications for Health and Wellbeing funding.</p> <ul style="list-style-type: none"> <li>• Wiltshire Wildlife Trust, £899.00 towards their Natural Connections - Nature-Based Wellbeing Programme.</li> <li>• Care Home Volunteers, £456.50, to recruit, train &amp; support volunteers.</li> <li>• Wiltshire Service Users' Network, £900.00 towards their Devizes Walking Buddy Scheme</li> <li>• Alzheimer's Support, £900.00 towards supporting Sidmouth St Day Club</li> </ul> <p>Further details on the Health and Wellbeing grant applications can be found under the grant report at agenda item 16.</p>	8.05pm

15	<b>Area Board Recap of the last 4 Years</b>	<b>8.15pm</b>
	To receive a recap from the Devizes Area Board Councillors on Area Board work during the last 4 years.	
16	<b>Area Board Funding</b> ( <i>Pages 57 - 68</i> )	<b>8.20pm</b>
	To consider the following applications to the Community Area Grants Scheme:	
	<ul style="list-style-type: none"> <li>• Erlestoke and Coulston Cricket Club, £5,000.00, towards a new pavilion at Walled Garden.</li> <li>• Wiltshire Museum, £2,262.13 towards a new boiler and temperature control.</li> <li>• Devizes Town Council, £2,405.00 towards supporting independent businesses in Devizes.</li> <li>• All Cannings Community Shop Society Ltd, £5,000.00 towards a new shop getting ready to build.</li> <li>• Devizes and District Foodbank, £3,000.00 towards a new delivery van.</li> <li>• Devizes Development Partnership, £3,144.73 towards new CCTV cameras + move to new location</li> <li>• Avon Road Community Assoc., £804.95 towards new goalposts for Avon Rd Park</li> </ul>	
17	<b>Open Floor</b>	<b>8.40pm</b>
	Residents are invited to ask questions of their local councillors.	
18	<b>Urgent items</b>	
	Any other items of business which the Chairman agrees to consider as a matter of urgency.	
19	<b>Close</b>	<b>8.45pm</b>
	The next meeting of the Devizes Area Board will be held on 18 May 2021 (time to be confirmed). This meeting will be to elect a Chair, Vice Chair and appoint Members to Outside Bodies and Working Groups for the forthcoming year.	
	The next full meeting of the Devizes Area Board will be held on 21 June 2021 at 6.30pm.	

# MINUTES

**Meeting:** Devizes Area Board  
**Place:** Online Meeting  
**Date:** 11 January 2021  
**Start Time:** 6.30 pm  
**Finish Time:** 8.30 pm

---

Please direct any enquiries on these minutes to:

Tara Shannon Senior Democratic Services Officer, (Tel): 01225 718352 or (e-mail) [tara.shannon@wiltshire.gov.uk](mailto:tara.shannon@wiltshire.gov.uk)

Papers available on the Council's website at [www.wiltshire.gov.uk](http://www.wiltshire.gov.uk)

---

## **In Attendance:**

### **Wiltshire Councillors**

Cllr Anna Cuthbert, Cllr Peter Evans, Cllr Sue Evans, Cllr Richard Gamble, Cllr Simon Jacobs (Chairman), Cllr Laura Mayes (Vice-Chair) and Cllr Philip Whitehead

### **Wiltshire Council Officers**

Dominic Argar (Assistant Multimedia Officer), Andrew Jack (Community Engagement Manager), Jason Salter (Head of Passenger Transport) and Tara Shannon (Senior Democratic Services Officer)

### **Partners**

Wiltshire Police  
Office of the Police and Crime Commissioner  
Lavington School  
Dauntsey's School

**Total in attendance:** 35 in the meeting and 2 watching the live stream

---

<u>Minute No..</u>	<u>Summary of Issues Discussed and Decision</u>
71	<p><u>Welcome</u></p> <p>The Chairman welcomed those present to the meeting, ran through the procedures for remote meetings and invited Members to introduce themselves.</p>
72	<p><u>Apologies for Absence</u></p> <p>Apologies for absence had been received from:</p> <ul style="list-style-type: none"> <li>• Ida McConnell – Devizes Indies</li> <li>• Cllr Judy Rose – Devizes Town Council</li> <li>• Cllr Nigel Carter – Devizes Town Council</li> <li>• David Geddes – Station Manager, Devizes, DWFRS</li> </ul>
73	<p><u>Minutes</u></p> <p>The minutes of the last meeting were considered. It was;</p> <p><b>Resolved:</b></p> <p><b>To approve the minutes of the meeting held on 16 November 2020.</b></p>
74	<p><u>Declarations of Interest</u></p> <p>There were no declarations of interest.</p>
75	<p><u>Chairman's Announcements</u></p> <p>The Chairman made the following announcements:</p> <ul style="list-style-type: none"> <li>• <b>Healthy Us Weight Management Programme</b> The Chairman gave details regarding the 'Healthy Us' free 12 week course. Which was open to anyone living in Wiltshire, aged 18 or over, with a BMI of 28 or above. Referrals for the virtual courses starting in January 2021 were now being taken. Please see <a href="https://www.wiltshire.gov.uk/public-health-weight-adults">https://www.wiltshire.gov.uk/public-health-weight-adults</a> for more information or email <a href="mailto:health.coaches@wiltshire.gov.uk">health.coaches@wiltshire.gov.uk</a>.</li> <li>• <b>COVID-19 Community Packs</b> The Chairman gave details on the latest COVID-19 rates and reiterated the governments 'Stay at Home' message and that everyone should act as if they had the virus. It was also announced that Wiltshire Council had created an updated community pack of information to help support communities during the ongoing COVID-19 pandemic, which contained information and advice on issues such as restrictions, testing and</li> </ul>



support. The pack could be found online here: [www.wiltshire.gov.uk/public-health-coronavirus#community-pack](http://www.wiltshire.gov.uk/public-health-coronavirus#community-pack) or see page 13 of agenda for more details.

- **Census 2021**

Census day would be on March 21, but households across the country would receive letters with online codes allowing them to take part from early March. The census was a once-in-a-decade survey that gave the government the most accurate estimate of all the people and households in England and Wales. Everyone was encouraged to take part. See <https://census.gov.uk/> for more information.

- **Local Plan Review Consultation**

As part of the Local Plan Review consultation, taking place from Wednesday 13 January to Tuesday 9 March 2021, Wiltshire Council were planning to host a series of live online consultation events for communities and other stakeholders. The Devizes event would be held online at 7.00pm, Wednesday 27 January. For more information or to book your place please go to <https://www.wiltshire.gov.uk/planning-policy-local-plan-review>. Supplement 1 also gave more details.

- **North Wessex Downs VIP project**

The North Wessex Downs VIP project was looking to replace a 4km section of the National Grid's overhead electricity transmission line to the North of Devizes with an underground connection. 11 pylons would be permanently removed from the landscape significantly enhancing views north of Devizes in the North Wessex Downs Area of Outstanding Natural Beauty (AONB). Further details could be found at <http://northwessexdowns.nationalgrid.co.uk/project>. It was hoped that the team could update at a future area board.

- **Wiltshire Council Investing in Devizes**

- The Chairman invited Cllr Philip Whitehead to update the meeting. Cllr Whitehead explained that Wiltshire Council invested in all Wiltshire towns and wanted to highlight investments Wiltshire Council had made in Devizes in the last few years. For example:
  - The Market Place and Shambles had been transferred to Devizes Town Council at no cost;
  - The canal towpath near Devizes was widened to 1.2m and resurfaced along its length;
  - Over £350,000 worth of works to improve London Road/Windsor Drive;
  - Many other roadworks, such as Bath Road and Nursted Road;
  - Over £250,000 to refurbish Devizes Library to create the Hub;
  - Working with businesses to enable them to stay in Devizes, for example purchasing land for them to use long term; and
  - The Devizes Gateway project.

	<ul style="list-style-type: none"> <li>• <b>Newman Road Bus Gates</b> It was announced that the bollards which enforced the bus lane at Newman Road had been removed due to problems with water damage and maintenance issues. The bus lanes would now be enforced by ANPR cameras.</li> </ul>
76	<p><u>Community Status Report</u></p> <p>Andrew Jack, Community Engagement Manager, gave a presentation on the Community Status Report which could be found at page 17 of the agenda. The officer explained that usually every 3 or 4 years a Joint Strategic Needs Assessment (JSNA) event was held to identify priorities for the area. However, the last JSNA had been cancelled due to COVID-19. The Community Status Report aimed to cover that process. It could also assess how the Devizes area was dealing with COVID-19 and the possible future needs that it might create.</p> <p>Factual data gathered for the JSNA and the results of a community survey were combined with data from partners such as the Police, the health sector, schools, parish councils and the voluntary and community sector in order to create the report.</p> <p>It was hoped that the report could use the intelligence gathered to highlight a few key priorities for the area board to focus on.</p> <p>After launching the report at this meeting, the CEM stated he would be contacting groups with questions relating to the current situation and how things were going. The report would be updated and brought back to the March meeting to be finalised and fed back to the community. The board could then work with partners on taking the priorities identified forwards.</p> <p>The Chairman thanked Andrew Jack for his presentation.</p> <p>Cllr Cuthbert joined the meeting.</p>
77	<p><u>Partner Updates</u></p> <p>Updates were received from the following partners:</p> <ul style="list-style-type: none"> <li>• <b>Wiltshire Police</b> Sgt Gareth Edwards gave an update to the meeting. Sgt Edwards introduced Tina Osborn as the new inspector for the Devizes, Pewsey and Marlborough Area. Sgt Edwards stated that in December in Devizes 105 crimes had been reported and 113 incidents. These figures were lower than the previous December's, which was thought to be as a result of restrictions and the lockdown, as less people were out and about. In response to a question from the Chair it was stated that there had been a lot of social media reports of dog thefts around Wiltshire. Dog thefts had increased nationally, however in Wiltshire eight dog thefts had been reported, which whilst very distressing for those involved was lower than</li> </ul>

one would think given the concerns raised. So the figures did not support the social media commentary. People were advised to ensure working dogs were kept securely and to be extremely careful if selling a dog, for example not selling from your house or giving people your location.

- **Office of the Police and Crime Commissioner**

Angus Macpherson, the Police and Crime Commissioner (PCC) gave his update at the end of agenda item 5, Chairman's Announcements, as he had to leave the meeting early in order to attend another meeting. The PCC explained that the maximum increase that was allowed to the police precept was £15 a year for a band D property, which was what the OPCC was asking for. This equated to a band D property seeing an increase of £1.25 a month. It was highlighted that Wiltshire Police were the third lowest nationally funded force in the country. The PCC detailed what had been delivered in the past year. Such as establishing a new rural crime team; recruiting many more officers and investing in a cyber-crime digital investigations unit. The extra £15 a year would help to fund an increase in officers and bolster community policing teams. Even with the uplift in precept, the force would still need to make savings of over £1 million. The OPCC was consulting on the proposals. More information could be found at [www.wiltshire-pcc.gov.uk](http://www.wiltshire-pcc.gov.uk) and the survey was located at <https://www.surveymonkey.co.uk/r/PNHBKSG> and was open until 2 February 2021.

In response to questions it was stated that the £15 was approximately a 7% increase. The percentage increase paid would be approximately 7% across all bands, however for properties in lower bands, the figure would be slightly less than £15 and properties in higher bands would pay slightly more than £15. However, band D was the measure used.

It was also stated that Wiltshire Police were working hard to make sure that people complied with COVID-19 regulations, 294 fixed penalty notices had been issued in relation to COVID-19 since the start of the pandemic. Since the latest lockdown restrictions were announced the force was moving away from education and towards enforcement. The deputy PCC sat on a scrutiny committee which analysed all tickets issued to ensure they were appropriate. The Chairman thanked Sgt Edwards for his update.

- **Dorset and Wiltshire Fire and Rescue Service**

The Chairman directed people to the written report in agenda supplement 2.

- **School Updates**

Ralph Plummer, Headteacher of Lavington School gave an update to the meeting. Mr Plummer stated that the school was open to key workers children and vulnerable children, and since the 4 January 2021, approximately 60-80 pupils had been attending each day. The school was

establishing lateral flow rapid testing on site which had required a big commitment from staff. Staff were now being routinely tested on site; a couple had tested positive which had resulted in some pupils needing to self-isolate. The delivery of remote learning was the main focus of the school at present, and it was going well. The staff had worked very hard to upskill and it was tiring to deliver, but the feedback was good, and Mr Plummer stated how proud he was of all his staff.

Members of the board passed on thanks to the school regarding all their hard work and passed on good feedback received. Cllr Mayes stated that Wiltshire Council had set aside £1 million to provide devices for home learning for those that needed them and wanted to check that the school had what they required. Mr Plummer stated they had received devices from the Council and believed that all who required a device had one. The school was canvassing parents to see who needed help with home learning during lockdown.

Mark Lascelles, Headteacher of Dauntsey's gave an update to the meeting. Mr Lascelles stated that the term up to Christmas had gone well, there had been 12 COVID-19 cases which the school felt they managed well. There had also been a terrible road accident at the end of last term where one of Dauntsey's pupils got knocked down. Thankfully the pupil would make a full recovery and Mr Lascelles passed on his thanks to the emergency services for their amazing response. This term however had not been positive. The school had just taken delivery of £200,000 worth of testing equipment when the government closed the schools. The school currently had 9 boarders present. Mainly international students who could not get home due to the restrictions in place. Dauntsey's was pressing on with remote learning. GSCE's and A levels had been cancelled, but Dauntsey students took International GCSE's which had not been cancelled. However, the feedback from many parents was that they did not want their children to have to take the exams. Mr Lascelles was very worried regarding the mental health impact of lock down on his pupils and thanked all his staff for their hard work.

The Chairman acknowledged Mr Dauntsey's comments and stated that he was aware of the latent mental health demand, particularly among young people and that Wiltshire Council was planning accordingly. The Chairman stated that he was very pleased the pupil that was knocked over would make a full recovery and thanked Mr Lascelles for his update.

- **Healthwatch Wiltshire**

The Chairman directed the meeting to the written update on page 27 of the agenda.

- **CCG Wiltshire**

The Chairman directed the meeting to the written update on page 29 of the agenda. The Chairman gave a brief update on the new medical

	<p>centre. The Full Business Case for the project was going to the CCG Governing Body on 21 January 2021 for approval. Construction was then scheduled to begin in 2021 with the new building opening in 2022. The CCG would attend the next Area Board to give an update.</p> <ul style="list-style-type: none"> <li>• <b>Town and Parish Councils</b> There were no updates.</li> <li>• <b>Devizes Indies</b> There was no update, however the Chairman encouraged everyone present to shop locally, even when shopping online, in order to help support Devizes businesses and independents.</li> </ul>
78	<p><u>Air Quality</u></p> <p>Cllr Richard Gamble, Chairman of the Air Quality &amp; Sustainable Transport Group gave an update to the meeting. A positive meeting had been held on 15 December 2020 and thanks was passed on to all attendees.</p> <p>Cllr Gamble reported that air quality data continued to be favourable in almost all locations. The Air Quality Action Plan was being updated across the county using Aecom consultants and the group would be feeding into that process.</p> <p>The group looked at the amount of Section 106 funds held for the area for public transport and for other sustainable transport purposes and noted that the Town Council had some material funds from the Community Infrastructure Levy.</p> <p>Cllr Gamble proposed 3 motions: that the minutes of the AQST be noted; that the revised Terms of Reference (on page 37 of the agenda) be approved and that the board confirm an additional £10,000 of the s106 money be allocated towards the Outline Strategic Business Case for Devizes Gateway Station as a contingency. All motions were seconded by Cllr Peter Evans, and voted on separately, it was:</p> <p><b>Resolved:</b></p> <ul style="list-style-type: none"> <li>• <b>To note the minutes of the AQST meeting held on 15 December 2020.</b></li> <li>• <b>To approve the revised Terms of Reference of the Devizes Air Quality and Sustainable Transport Steering Group.</b></li> <li>• <b>To approve that an additional £10,000 of s106 funds be allocated towards the Outline Strategic Business Case for Devizes Gateway Station as a contingency.</b></li> </ul> <p>Cllr Gamble announced that the next meeting of the AQST group would be held on 16 February 2021 via MS Teams.</p> <p>The Chairman invited Jason Salter, Head of Service Passenger Transport to</p>

give an update to the meeting.

Jason Salter explained that bus services were running at about 30% of normal patronage and the bus industry as a whole was being largely subsidised by government grants.

It was confirmed that the Devizes Town Service was not ceasing. The contract with the previous operator had come to an end and therefore was put out to tender. A new operator, Faresaver, would start running the service on 1 March 2021 with a schedule identical to the current timetable. The contract had been awarded for 2 years which was shorter than usual. The Passenger Transport Unit were also looking at how buses could be used in the future to support transporting people to and from the Devizes Gateway Station.

The officer stated that there was over £500,000 of s106 money available, but the pandemic situation made it difficult to plan long term. A consultation on how to best spend these funds would be undertaken later in the year. The urgent care medical centre in Marshall Road should be opening in 2022 and it was confirmed that appropriate public transport would serve the site.

Better Deal for Buses had awarded Wiltshire Council £671,000 in March 2020 towards enhancing services or restoring lost bus services. A consultation had been undertaken last Spring, but another consultation would be undertaken to ensure that requirements had not changed. A direct bus service from Devizes to Marlborough was under consideration as was a faster, improved service from Devizes to Salisbury.

As part of the Better Deal for Buses scheme Wiltshire Council had put in a demand responsive bid for approximately £1 million towards bringing services up to date and modernisation, however they had yet to hear the results of the bid.

The Government had stated that the Passenger Transport Unit were now able to use some of the £671,000 awarded to support services hit by COVID-19, where the commercial service had stopped. The National Bus Strategy should be out late in the Spring and this would be a key driver for the future of the industry.

In response to questions the officer stated that bus service provisions would be considered under the transport elements of the Local Plan. Mr Salter stated that he would catch up with colleagues regarding this and report back to Cllr Gamble.

A member of the audience, Noel Woolrych stated that there was now a survey available regarding the Devizes Gateway project and encouraged people to take part at: <https://www.devizes.org.uk/index.php/devizes-gateway/devizes-gateway-online-survey.html>.

A further comment from an attendee, Jasper Selwyn, was received stating that

	<p>he was pleased that the Devizes Town Service contract had only been awarded for 2 years. It was hoped that the service could be thoroughly reviewed then. Mr Selwyn felt that the circular route was not ideal. Mr Selwyn also highlighted that the Lay Wood Development had no public transport and it was hoped that s106 monies could be used to provide a service there. Mr Salter stated that the team hoped to resolve the Lay Wood issue in the summer.</p> <p>The Chairman thanked everyone for their contributions.</p> <p>Cllr Laura Mayes left the meeting at 7.30pm.</p>
79	<p><u>Environmental Sustainability</u></p> <p>The Chairman invited Graham Martin of Sustainable Devizes to give a presentation to the meeting.</p> <p>Mr Martin started by detailing hypothetically how Spring may look in around 2030 – 2040. This scenario detailed how COVID was an ongoing annual problem; temperatures were higher; technology had improved and was more prevalent; traffic was reduced; people worked less; and social credits were in place. Compared to today’s standards people would be poorer in terms of wealth, however they would be living in a sustainable society which valued health and community.</p> <p>The 1987 UN definition of sustainability was given as “meeting the needs of the present without compromising the ability of future generations to meet their own needs”.</p> <p>Mr Martin explained the 3 pillar model of sustainability where the 3 pillars feeding into sustainability were economics, society and environment. This could create complex solutions.</p> <p>It was stated that a good way to look at sustainability was as a venn diagram, where the three spheres of economics and business; social and culture and the environment overlapped to produce sustainability. It was explained that the key to looking at sustainability was to work across climate/environmental science and social sciences (economics, psychology and sociology) and adaptation planning was key.</p> <p>Mr Martin hoped that the Devizes Area Board could engage in sustainability by:</p> <ul style="list-style-type: none"> <li>• Forming part of a ‘Sustainability Alliance’.</li> <li>• Having a standing agenda item at the Devizes Area Board on sustainability.</li> <li>• Planning for the future by undertaking a ‘future thinking’ exercise.</li> </ul>

Mr Martin felt that it was important to do this as the Devizes Area would be able to help shape its future. With a unified view of the future, coherent transition plans could then be developed, rather than have to make sudden adaptation plans in response to events. With coherent plans in place the Devizes area would be in a better position to leverage resources from the government, the local authority, business and voluntary organisations.

As stated previously Mr Martin felt that Transition Planning was key. This should include 'Future Thinking' as a method, where past and present trends could be used to develop scenarios. Whilst unlikely that any one scenario of the future would play out fully, one could pick the bits of the scenarios you really wanted to happen and the ones to be absolutely avoided and make plans.

Mr Martin explained that we should plan for:

- Changing work patterns
- Robotics & automation
- COVID-19 Debt
- Aging population
- Social Care
- Inequality of wealth
- Soil degradation
- Loss of biodiversity
- Food insecurity
- Air quality

Mr Martin requested that Devizes Area Board would engage as detailed above. The Chairman thanked Mr Martin and opened the topic up for discussion.

A debate followed where Members stated that as a democratically elected body it was a difficult topic. For example, regarding the implementation of cycle lanes, there were lobby groups on both sides as people often had opposing views. So, when the Council consulted, there was often not a clear mandate or any clarity on how to proceed.

Mr Martin stated that he wanted a clear mandate or intent from the board regarding sustainability and a forum or platform where these issues could be discussed. He acknowledged this would not be easy but wanted to empower the community.

In response Members stated that there was intent, which was why Wiltshire Council had declared a climate emergency and would be carbon neutral by 2030. Wiltshire Council was pro cycling. However, only 1% of the population cycle regularly and Wiltshire was a rural county so there were areas where people would have to use their cars. There were also limited budgets. It was hoped that natural thoroughfares to the centre of Devizes could be created that people could use. Members confirmed they would be happy to discuss these issues further in the future.



	<p>In response to a question from a member of the public Stan Jonik, Cllr Whitehead stated that installing fast electric car charging points was a difficult task, as the whole infrastructure needed to be upgraded to accommodate these. Other agencies would need to be involved. Cllr Jacobs also stated that battery technology would improve so most people would be charging their electric cars at home.</p> <p>John Schofield, of Sustainable Devizes gave a brief update on bike sustainability, following on from the cycling survey they had undertaken. A Cycle Friendly Devizes group had been formed with the simple remit to get more people cycling in the area. They would look at improving infrastructure, cycle routes, training and maintenance. Current efforts were focusing on the London road corridor and looking at alternative routes, for example from Devizes Marina, or through Quakers Walk. The group were looking at short term and longer term infrastructure plans.</p> <p>Noel Woolrych stated that he had helped institute the London Road cycle route in 1998. He had been in conversation with Martin Reed regarding secure cycle parking and CCTV coverage. The aim was to look at where people actually park their bikes and implement secure storage there, with CCTV coverage.</p> <p>The Chairman thanked everyone for their contributions.</p> <p>At the end of the meeting Mr Martin requested clarity on the Board's stance. It was stated that the board needed to discuss this further and also to consult with officers. Therefore, they would come back to Mr Martin either outside of the Area Board or at the next meeting.</p>
80	<p><u>Open Floor</u></p> <p>There were no questions from the floor.</p>
81	<p><u>Community Area Transport Group (CATG)</u></p> <p>The Chairman invited Cllr Richard Gamble as Chairman of the CATG to update the meeting.</p> <p>Cllr Gamble stated that there had been a successful meeting of the CATG held on 15 December 2020 and thanked those who had attended. There had been over 30 issues on the list for the CATG to consider and a remaining budget for the current financial year of only £3,000, so one of the most important tasks was to reduce the list to manageable levels and to ensure that parishes contributed as much as they could if they wanted projects to be delivered.</p> <p>Cllr Gamble highlighted some of the topics discussed by the group. The full notes of the CATG meeting were available at pages 39 to 56 of the agenda and the next meeting of the CATG would be held on 16 February 2021. At the end of the discussion it was;</p>

	<p><b>Resolved:</b></p> <p><b>To note the minutes of the CATG meeting on 15 December 2020 and approve an additional £400 towards SID deployment work at Potterne.</b></p>
82	<p><u>Local Youth Network</u></p> <p>Keith Brindle, Chair of Wiltshire YFC and vicar at St James’s, gave an update to the meeting. It was explained that youth work had been very difficult since the implementation of restrictions and lock down. Some funding had been obtained towards the end of the last lock down in order for detached youth work to be undertaken. Over 300 teenagers had been surveyed regarding their health and wellbeing and a report on the findings was currently being written. This was well timed and would help ascertain what support could be offered. However, the situation was difficult due to a lack of youth workers. Keith Brindle also stated that he had been working with the Wiltshire Centre for Independent Living and their approach was very inspiring and could possibly be adapted to youth work.</p> <p>Cllr Cuthbert commented that the mental health of young people during lock down was a troubling issue and felt that enabling young people to meet online safely was a good idea, so was encouraged by the youth grant application. The Chairman stated that Wiltshire Council was also looking at youth provision and mental health provision.</p> <p>A representative of Bromham Youth Club spoke in support of their grant application to purchase technology to enable young people to attend their online youth club. The application was considered and it was;</p> <p><b>Resolved:</b></p> <p><b>To grant Bromham Youth Club, £747.00, towards new technology for online meetings.</b></p>
83	<p><u>Community Engagement Manager Update</u></p> <p>Andrew Jack, Community Engagement Manager gave an update to the meeting regarding area board funding. It was explained that in 2019/20 Wiltshire Council, over all area boards, had invested over £1,312.718 into 689 community led projects. The total value of the projects supported by the 18 area boards was £6,112,577. Which meant that for every £1 invested, an additional £4.65 worth of community value was added, this had increased from £3.49 in 2018/19.</p> <p>There had been over 4,461 volunteers who helped to support the projects and the number of people who participated in the projects was 40,227. A breakdown of the types of projects that were supported by each funding stream was also given. It was felt that area board funding was very worthwhile and represented a good outcome on the funds invested.</p>

84	<p><u>Area Board Funding</u></p> <p>Representatives of the organisations applying for Community Area Grant Funding spoke in support of their applications. The board considered the applications and it was;</p> <p><b>Resolved:</b></p> <ul style="list-style-type: none"> <li>• <b>To grant Potterne Cricket Club, £4,079.00 towards a new mower.</b></li> <li>• <b>To grant The Bridge Project, £700.00 towards a laptop for a Thrive Hub worker providing learning support for children.</b></li> </ul>
85	<p><u>Urgent items</u></p> <p>There were no urgent items.</p>
86	<p><u>Close</u></p> <p>The Chairman thanked everyone for attending and announced that the next area board meeting would be held on 15 March 2021 at 6.30pm.</p>

This page is intentionally left blank

## Chairman's Announcement

<b>Subject:</b>	Update on targeted COVID-19 community testing for asymptomatic people
<b>Web contact:</b>	Email: <a href="mailto:Hayley.mortimer@wiltshire.gov.uk">Hayley.mortimer@wiltshire.gov.uk</a>

We will shortly be introducing the Government's COVID-19 rapid community testing initiative for specific groups of asymptomatic people in Wiltshire.

Our programme is primarily aimed at the following groups of people:

- Smaller businesses (50 employees or less) where staff are unable to work from home
- Early years staff based at private (non-maintained nurseries)
- Childminders

Our test sites will be at the following locations:

- Trowbridge – County Hall
- Devizes – Leisure Centre
- Salisbury – Five Rivers Health and Wellbeing Centre
- Chippenham – Monkton Park

Devizes will be the first to open on 18 February and the rest will soon follow. Until the other sites are open, the Devizes site will initially be the only one that people can book a place for.

Those in smaller businesses who cannot work from home, staff at private (non-maintained) early years settings, and childminders have been chosen because they are not currently involved in any other national mass-testing programme.

People will have to book to arrange an appointment and will not be tested if they have not done this.

The tests are self-administered and will take less than 15 minutes and results should be known within half an hour.

This is not to be confused with surge testing. Surge testing is increased testing (including door-to-door testing) and enhanced contact tracing in specific locations in England and is not currently taking place in Wiltshire.

Free testing continues to be available to everyone in Wiltshire who has COVID-19 symptoms – high temperature, continuous cough or loss of / change in taste or smell. People should visit [www.nhs.uk/coronavirus](http://www.nhs.uk/coronavirus) or call 119 to book a test in that instance.

With regards to early years staff, we're very aware that due to the need to have the correct ratios at settings, that logistically it might be difficult for them to release staff to attend one of the testing sites. We completely sympathise with this, but at the moment this is the only way we are able to provide this testing service. We are speaking to representatives at national Government to see if more can be done and will update everyone should the situation change.

When used alongside other measures, this type of community testing has the potential to help reduce the spread of COVID-19 within communities.

However, should people choose to participate in the testing programme, it must be stressed that getting a negative test result is only a snapshot indication that the person tested didn't

## ***Chairman's Announcement***

have COVID-19 at that time. It is therefore not a passport to freedom and all other COVID secure measures must continue to be followed.

Anyone who receives a positive Lateral Flow Test result automatically activate legal obligations to self-isolate and may also claim for a Test and Trace payment if they are eligible. If we all continue play our part, then we can control the spread of the virus and help ease the pressure that our health and care services are under.

NHS Test and Trace is working with government departments, institutions and employers across both public and private sectors to support delivery of asymptomatic testing to large organisations, including those providing critical services. More information on this can be found at Register to order coronavirus tests for your employees - GOV.UK ([www.gov.uk](http://www.gov.uk)) More information, including comprehensive FAQs can be found at:

[www.wiltshire.gov.uk/publichealth](http://www.wiltshire.gov.uk/publichealth)- coronavirus-testing

If you have any further questions, please don't hesitate to contact Hayley Mortimer, Public Health Consultant on [hayley.mortimer@wiltshire.gov.uk](mailto:hayley.mortimer@wiltshire.gov.uk) or Jessica Ryan, Public Health Specialist, [jessica.ryan@wiltshire.gov.uk](mailto:jessica.ryan@wiltshire.gov.uk)

We will keep you updated on this work.

# CENSUS 2021

Households across the local authority area of Wiltshire, will soon be asked to take part in Census 2021.

The census is a once-in-a-decade survey that gives us the most accurate estimate of all the people and households in England and Wales. It has been carried out every decade since 1801, with the exception of 1941.

It will be the first run predominantly online, with households receiving a letter with a unique access code, allowing them to complete the questionnaire on their computers, phones or tablets.

“A successful census will ensure everyone from local government to charities can put services and funding in the places where they are most needed,” Iain Bell, deputy national statistician at the Office for National Statistics, said.

“This could mean things like doctors’ surgeries, schools and new transport routes. That’s why it is so important everyone takes part and we have made it easier for people to do so online on any device, with help and paper questionnaires for those that need them.”

Census day will be on March 21, but households across the country will receive letters with online codes allowing them to take part from early March.

The census will include questions about your sex, age, work, health, education, household size and ethnicity. And, for the first time, there will be a question asking people whether they have served in the armed forces, as well as voluntary questions for those aged 16 and over on sexual orientation and gender identity.

Results will be available within 12 months, although personal records will be locked away for 100 years, kept safe for future generations.

For more information, visit [census.gov.uk](https://www.census.gov.uk).

If you need help to promote the census, visit our [Downloadable resources](#) page.





# Chairman's Announcements

<b>Subject:</b>	Fostering in Wiltshire
<b>Web contact:</b>	Email: <a href="mailto:fostering@wiltshire.gov.uk">fostering@wiltshire.gov.uk</a> Web: <a href="http://www.fosteringwiltshire.uk">www.fosteringwiltshire.uk</a>

Our foster carers do an amazing job, making a massive difference to the life chances of some of Wiltshire's most vulnerable children and young people. Foster carers provide a safe and nurturing home for our children who have experienced abuse, trauma and loss.

We are currently seeking to recruit 100 new foster carers over three years so that our children can continue to live in their local communities, within Wiltshire. We started a campaign back in May 2020 at the start of Foster Care Fortnight to encourage more applications to foster. To date, we have successfully recruited 26 new fostering families towards our target. This is great news, but we still don't have enough to keep all our children in care within Wiltshire, especially for our teenagers.

With more Wiltshire Council foster carers, our children and young people can remain living locally, which means they are more readily able to remain in the same school, see friends and maintain relationships with their family.

We are sharing our message with each area board, with the hope you can encourage people to support and promote our recruitment campaign and highlight the importance of foster care in your local communities.

In all areas, we require more fostering families to look after our children in care. We know that some areas may need a significant increase whereas a few others may only need a few more. We would like our fostering service to get to the position where we are able to offer children a choice of foster carer to best suit their needs.

We especially need more foster carers who want to care for our teenagers and specialist carers, able to look after a parent and child and /or provide an emergency home at a time of crisis and/or look after children with complex medical needs and/or disabilities.

Louise, a 14 year old young person who lives in foster care, has explained below how foster carers can help teenagers deal with the ups and downs of growing up.

"When I've been upset, they've cheered me up. They also help me understand my feelings and help me with my worries. They are also good fun too and don't take things too seriously. Children need foster carers who have lots of time. They listen to what I have to say and are interested in my thoughts. The three things I think are most important for foster carers are: listen to what I say, make me feel like I am a part of their family and get along with me in general."

To become a foster carer, people need to be over 21 years of age and have a spare bedroom. More details are available on the fostering website: [www.fosteringwiltshire.uk](http://www.fosteringwiltshire.uk)

Fostering payments vary depending on the skills and experience of the foster carer, starting at £350 per week per child up to a maximum of £1300 per week for a specialist parent and child carer providing an assessment.

People can find out more information by:

- Calling fostering on 0800 1696321
- Emailing [fostering@wiltshire.gov.uk](mailto:fostering@wiltshire.gov.uk)
- Visiting [www.fosteringwiltshire.uk](http://www.fosteringwiltshire.uk)
- Texting 'Foster' to 60002



# Chairman's Announcements

<b>Subject:</b>	Wiltshire Independent Visitor Scheme
<b>Web contact:</b>	Email: <a href="mailto:Sheila.lupton@wiltshire.gov.uk">Sheila.lupton@wiltshire.gov.uk</a> <a href="mailto:IVScheme@wiltshire.gov.uk">IVScheme@wiltshire.gov.uk</a> <a href="https://www.wiltshire.gov.uk/children-young-people-independent-visitor-scheme">https://www.wiltshire.gov.uk/children-young-people-independent-visitor-scheme</a>

Wiltshire Independent Visitor Scheme provides independent befriending support to children in the care of Wiltshire Council. These are children who are fostered or living in other care settings, usually in Wiltshire but sometimes outside the county borders. It is a requirement that the council to provide an Independent Visitor service, but young people chose whether or not they wish to take up this offer. This means they are really motivated to take part!

Our volunteer Independent Visitors (IVs) play a really important role, visiting the young person they are “matched” with regularly, listening to them and taking an interest in their lives. They offer consistency, and quality, fun, one to one time. IVs make a long-term commitment to support a young person until they leave the care system, and often beyond this time.

We already have a fantastic team of almost 60 volunteer IVs, who are out supporting young people in the community. The scheme is very popular with young people and currently we have a waiting list of those waiting to be linked up with an IV.

These are some comments from young people in our scheme, talking about what having an IV means to them:

*“She’s very funny, very caring, if I am ever sad, she is someone to talk to”.*

*“She’s brilliant, bubbly and nice to be around.”*

*“It’s lovely to have somebody ‘normal’ to talk to outside of the system.”*

*“You get to do things you never knew about.”*

We are sharing our message with each Area Board, with the hope you can promote our volunteering opportunity and highlight the importance of this scheme. We don’t want our young people to be kept waiting for a “match” and so we are keen to find the right volunteers in the places where they are needed. At present, we are particularly short of male volunteers, those who have experience of supporting children with more complex needs, and also volunteers who might be willing to travel further afield if needed (e.g. the south coast and Gloucester area). We want to find volunteers from Wiltshire if possible, in case young people move back in-county when they are older.

All volunteers will require an enhanced DBS disclosure. They should be over 18 and able to make a long-term commitment to meet with a young person for a couple of hours every three to four weeks. There is a requirement that all volunteers should be car drivers and be independent from Wiltshire Council (not a teacher, foster or residential carer or member of children’s social care staff).

Volunteers are reimbursed for their travel and any visit expenses. The scheme also offers volunteers regular training and support.

## How to register an interest

If you would like to know more about the IV Scheme, please visit

Email: [IVScheme@wiltshire.gov.uk](mailto:IVScheme@wiltshire.gov.uk)

Phone: Shelley Barnes on 01225 713897 or Deborah Welling on 01225 713980



# Chairman's Announcements

<b>Subject:</b>	<b>Stand as a unitary, town or parish councillor in May</b>
<b>Web contact:</b>	Links provided below

## Stand as a unitary, town or parish councillor in May

Do you have the desire to help and become involved in your community?

Do you have time to give?

Do you like a different challenge every day?

...If so, it might be time for you to stand as a local councillor.

**Elections are taking place on 6 May 2021 for Unitary, Town and Parish Councils – it's not too late to be nominated!**

### Unitary Elections

Find out more about what it is like to be a Wiltshire unitary councillor, by visiting [Becoming a councillor - Wiltshire Council](#) where you will find FAQs, including details of how to manage the role around work commitments. See a video from the [Local Government Association](#) about why you should consider standing.

The role can be flexible around existing commitments and unitary councillors are currently paid an allowance of £13,833 per year for spent on the role. A carers allowance is also available to help towards care for a dependent whilst you undertake some council duties, such as attending meetings.

### Parish and Town Council elections

A parish councillor is immersed in the local community and it can be a really rewarding role. Find information and videos from parish councillors about their experiences with the National Association of Local Councils [Elections — #MakeAChange \(nalc.gov.uk\)](#), or get in touch with your local parish council.

### What next?

Details of how to run for election are available at:

For the unitary elections visit [Unitary elections - Wiltshire Council](#)

For the Town and Parish Elections visit [Town and parish elections - Wiltshire Council](#)

The [Local Government Association](#) and [Electoral Commission](#) also have lots of useful guidance.





## DORSET & WILTSHIRE FIRE & RESCUE SERVICE

### WILTSHIRE AREA BOARD REPORT

#### Community Safety Plan

DWFRS Community Safety Plan can be found on the DWFRS website;

<http://www.dwfire.org.uk/community-safety-plan/>

#### Prevention

We are committed to making a real difference to the lives of people in Dorset and Wiltshire. Our aim is to reduce the level of risk and harm to our communities from fire, targeting those most at risk. We do this primarily through our Safe and Well visits.

A Safe and Well visit is **FREE** and normally lasts about one hour covering topics such as:

- Using electricity safely
- Cooking safely
- Making an escape plan
- What to do if there is a fire
- Keeping children safe
- Good practice – night time routine and other points relevant to you
- Identifying and discussing any further support the occupier may need

Are you or anyone you know:-

- Over the age of 65?
- Need a smoke detector?
- Have a long-term health condition?
- Suffer from poor hearing or sight loss?
- Would you struggle to escape in the event of a fire?

If you can answer yes to more than one of these questions, then please call us on 0800 038 2323 or visit <https://www.dwfire.org.uk/safety/safe-and-well-visits/>



DORSET & WILTSHIRE  
FIRE AND RESCUE

## Protection

On-going interaction by Protection Team members with Local Authorities, Private landlords and tenants regarding fire safety-related matters: external cladding systems; fire detection and warning systems; fire resisting doors (& self-closers); combustibility/fire resistance of construction materials; commercial and residential sprinklers systems and water-mist suppression systems

### General Enquiries

If you have a general fire safety enquiry regarding commercial property, please email [fire.safety@dwfire.org.uk](mailto:fire.safety@dwfire.org.uk) and the Fire Safety Team will respond in office hours.

### Fire Safety Complaint

If you wish to tell us about fire safety risks in commercial premises, such as locked or blocked fire exits, you have three options:

- You can email the fire safety department at [enforcement@dwfire.org.uk](mailto:enforcement@dwfire.org.uk)
- Call 01722 69 1717 during office hours (9am-5pm).
- Call our Service Control Centre on 0306 799 0019 out of office hours (5pm-9am)

## On Call Recruitment

Have you always wondered if you could join the fire service, but haven't had the opportunity to find out more? Have you found yourself seeking your next challenge, keen to give back to the local community or wanting to learn new skills including leadership and teamwork? Then becoming an on-call firefighter is for you.

As a paid position, on-call firefighters commit anywhere between 40 to 120 hours per week, during which time they must be able to respond to the station immediately.

Many have 'normal' jobs during the day, then upon their return home make themselves available overnight or during the weekends. Some of our crew respond from their workplaces during the day, and we are very grateful to their employers for releasing them to perform their vital duties.

Anyone over 18 years old can apply (although you can also apply once you are 17½) you must be able to respond and attend the fire station within 5-8 minutes, you have a good standard of physical fitness (i.e. you are generally active), and you must have the right to work in the UK.

Further information on becoming an On Call Firefighter can be found at [www.dwfire.org.uk/working-for-us/on-call-firefighters/](http://www.dwfire.org.uk/working-for-us/on-call-firefighters/) or should you have any questions, you can call **01722 691444**.





## **Recent News & Events**

### **Mass vaccination volunteers**

Volunteers from the Service have been helping to crew the mass vaccination centre that has opened at Salisbury City Hall.

Our support started on 26 January with six members of staff working seven days a week, drawn from corporate, Fire Control and operational teams, dropping to four members of staff every day from 1 February. This level of staffing was to meet the initial demand for reliable support to get the centre running and, in this phase, we were acting as marshals to meet and guide people turning up to receive their vaccinations.

Since 8 February, we have been providing two people per day to act as shift supervisors, organising the marshals who are now sourced from public volunteers. By 14 February, we had covered more than 130 shifts, and around 780 hours. WM Paul Howell has been the liaison with the on-site coordinator and has done a great job keeping the rota full.

### **Dorset & Wiltshire Fire and Rescue Authority want to hear from you**

Dorset & Wiltshire Fire and Rescue Authority (DWFRA) is inviting local people to give their views on its draft Community Safety Plan, after a public consultation into the plan opened today (17 February), running until 13 May.

All fire and rescue authorities have a statutory duty to produce a Community Risk Management Plan and DWFRA fulfil this requirement through the Community Safety Plan. With future financial uncertainty, new challenges and a need to find further savings each year, the Authority is committed to continue looking at how it can work smarter and put every penny of the budget to its best use.

The draft plan sets out the key challenges and risks over the coming years, and details what the Authority intends to carry on doing and what will be reviewed, to continue providing a high level of service to the communities of Dorset and Wiltshire.

The draft plan, accompanying summary video and a feedback form can be found at [www.dwfire.org.uk/draft-community-safety-plan-2021-24-consultation](http://www.dwfire.org.uk/draft-community-safety-plan-2021-24-consultation) – the closing date for comments is 13 May. Feedback can also be emailed to [consultation@dwfire.org.uk](mailto:consultation@dwfire.org.uk).



### **The DWFRS Prince's Trust programme goes digital**

Dorset & Wiltshire Fire and Rescue Service (DWFRS) are now recruiting for the upcoming Prince's Trust Achieve programme. Working in partnership with The Prince's Trust, this 8 week course will be delivered digitally for young people aged 16-25 who are not in education, employment or training.

Programme involves a mixture of group activity sessions via video calls to encourage the participants to get to know each other and build their confidence, as well as completing tasks set by staff for participants to complete independently. Staff will support the young people to complete work that will lead to the Prince's Trust Personal Development and Employability Skills Certificate.

Debbie Harvey, Course Leader explains "We are really excited about delivering the Achieve programme online as it's the first fully digital course we have delivered. With the current lockdown restrictions in place, we wanted to provide young people with the opportunity to use their time to meet new people, build confidence and gain skills employers are looking for."

She added "Topics being delivered over the 8 weeks include Digital Skills, Preparing for a Healthy Lifestyle, Managing Money, Presentation Skills and Career Planning as well as receiving individual support to search and apply for employment opportunities."

The course will run 5 days a week, starting on Monday 22<sup>nd</sup> February and finishing on Friday 16<sup>th</sup> April. Spaces are limited so if you are interested in finding out more, get in touch with Debbie Harvey as soon as possible on 07500 066134 or email [Debbie.Harvey@dwfire.org.uk](mailto:Debbie.Harvey@dwfire.org.uk)

### **Updated version of Hazard House launched**

The Education team has launched an updated version of its online Hazard House, a 360° virtual tour that highlights the importance of fire safety.

This bespoke educational tool is designed so that both children and adults can really think about their safety in their own homes.

The aim of Hazard House is to embed an awareness of fire safety in a fun and interactive way.

To visit the Hazard House, visit our website at [www.dwfire.org.uk/visit-our-hazard-house](http://www.dwfire.org.uk/visit-our-hazard-house)



**DORSET & WILTSHIRE  
FIRE AND RESCUE**

## Demand

Total Fire Calls for Devizes Fire Station for period January – February 2021:-

Category	Total Incidents
No. of False Alarms	17
No. of Fires	11 – 7 x Chimney 1 x Rubbish 2 x electrical fires 1 x industrial oven
No. of Road Traffic Collisions and other Emergencies	14
<b>Total</b>	<b>42</b>

### Local Incidents of Note

No major incidents of note happened within the reporting period

.....David Geddes  
Station Manager

Email: ...David.geddes@dwfire.org.uk

Tel: .....

Mobile: 07826 532607....



## Mental health forum members produce their own guide to support services

People with lived experience of mental ill health have produced their own comprehensive guide to mental health and wellbeing services on offer in Wiltshire.

Members of the Wiltshire Mental Health Open Forum worked together to compile the Wiltshire Mental Health and Wellbeing Support Services list, which details where adults, children and young people can get support, counselling, and advice on topics such as addiction, bereavement and homelessness.

Set up in July 2020, the forum is a joint collaboration between Healthwatch Wiltshire and mental health service provider Avon and Wiltshire Mental Health Partnership NHS Trust (AWP), and is supported by a range of organisations including Wiltshire Council, Richmond Fellowship, Carer Support Wiltshire and Citizens Advice.

The free online forum, which runs once a month, provides a unique opportunity for people to speak directly to those who run mental health services in Wiltshire, talking about their experiences and sharing their ideas for ways services could be improved.

Forum regulars wanted to create the list of contacts as a way of helping people who are struggling with their mental health to find the right support for them quickly and easily.

**One member** said: “I found, as a mental health service user, it was especially useful to learn more about the different organisations that are out there and to be able to contribute my opinions and ideas and for them to be listened to by professionals. Being part of the creation of the list was very exciting.”

AWP Local Involvement Coordinators **Teresa Bridges and Christina Gregory** said: “We have been really pleased with the way the forum is going and the willingness of people to join us virtually and get their views heard.

“Service users and providers informed us that there was not enough information out there about the range of services available to someone needing mental health support in Wiltshire, and when someone is very poorly the last thing they would do is look at notice boards or search online. Therefore they needed something that could be given to them directly, by their GP for example, and hopefully this is what we have achieved.”

**Claire Edgar**, Director - Learning Disabilities and Mental Health at Wiltshire Council, said: “Having access to support and advice for those struggling with mental health is so important and particularly so at this current time as we all cope with the challenges of life during the pandemic. This guide is going to be a tremendous help to many people to help them access the right support with ease.”

**Jo Woodsford**, Volunteer and Partnerships Lead at Healthwatch Wiltshire, said: “Our members have taken complete charge of putting this list of resources together, bringing their own experiences to creating something that not only benefits them but will help other people too. Their determination and enthusiasm has been amazing, and we’d like to say a big thank you to them for all their hard work.”

Learn more about the forum and download the guide at [healthwatchwiltshire.co.uk/wiltshire-mental-health-open-forum](https://healthwatchwiltshire.co.uk/wiltshire-mental-health-open-forum)



## Update for Wiltshire Area Boards

February 2021

### Coronavirus vaccination

More than 137,000 people in Bath and North East Somerset, Swindon and Wiltshire have received their first coronavirus vaccination since we began vaccinating in December 2020.

By the end of January we had offered the vaccine to health and care workers and residents in all care homes in Wiltshire.

Vaccination across the county is being led by GPs working together in Primary Care Networks with additional services available in a large vaccination centre in Salisbury City Hall and, for those in west Wiltshire, at Bath Racecourse.

Early February saw three pharmacies in the region starting to provide the vaccine to those people who are currently eligible - Shaunaks Pharmacy in Westbury, The Pharmacy in Ludgershall and Avicenna Pharmacy in Swindon. Due to space constraints, the Pharmacy in Ludgershall is basing its vaccine clinic at the nearby Memorial Hall.

The three pharmacy vaccination sites can be booked through the national coronavirus vaccine booking system, along with the large vaccination centres at Bath Racecourse and Salisbury City Hall.

Vaccinators are also now visiting housebound patients who fall into the top priority groups in their own home, and we hope to have completed this phase of the vaccination programme by the middle of February

The CCG website has a dedicated Covid-19 vaccination page [www.bswccg.nhs.uk/latest-covid-19-updates](http://www.bswccg.nhs.uk/latest-covid-19-updates) with all the latest information including a detailed question and answer section which is updated regularly as issues arise.

We have established an email address for any enquires from the public relating to the vaccination programme: [bswccg.vaccinequery@nhs.net](mailto:bswccg.vaccinequery@nhs.net)

### Change to the management of the PALS and complaints service for Wiltshire

From Monday 1 February 2021 our Patient Advice and Liaison Service (PALS) and complaints service for Wiltshire will be managed by the South, Central and West

Commissioning Support Unit (SCWCSU) for a period of approximately nine months. The SCWCSU team already handle feedback for the Swindon locality.

The SCWCSU team will be taking on new cases from 1 February 2021. All existing cases will be retained and closed down by the CCG in line with existing timeframes.



## Covid-19 vaccination programme: Stakeholder briefing

Thursday 4 March 2021



Gill May,  
Director of Nursing and  
Quality

“Our vaccination total now stands at more than 315,000, which means we have already vaccinated more than two thirds of all people included in the top nine priority groups as outlined by the Joint Committee on Vaccination and Immunisation.

“This progress has been monumental, and I couldn’t be more proud of every single person who has helped make the rollout of the coronavirus vaccine, which – let’s not forget – is the largest vaccination programme ever undertaken, a success.

“But, for every grand achievement, we know there are always going to be minor sticking points that require us to work that bit harder to overcome.

“This week, we heard from many people in Swindon who were concerned after receiving an invitation to book a vaccine appointment at one of the large centres located out of town.

“We know the prospect of travel can cause many to feel anxious, which is why we have worked hard to share the message that all people contacted by the national booking system will still be contacted by their GP practice with details of how to be vaccinated locally.

“At present, Swindon is well served by vaccine clinics, including two recently-added pharmacy sites in Highworth and Lawn, but we are always looking at what other venues can be introduced to help make the vaccination process as convenient as possible.

“Tonight sees the CCG hold its first Opening Doors event - via Zoom - for people from black, Asian and minority ethnic backgrounds to share their concerns about the vaccine programme.

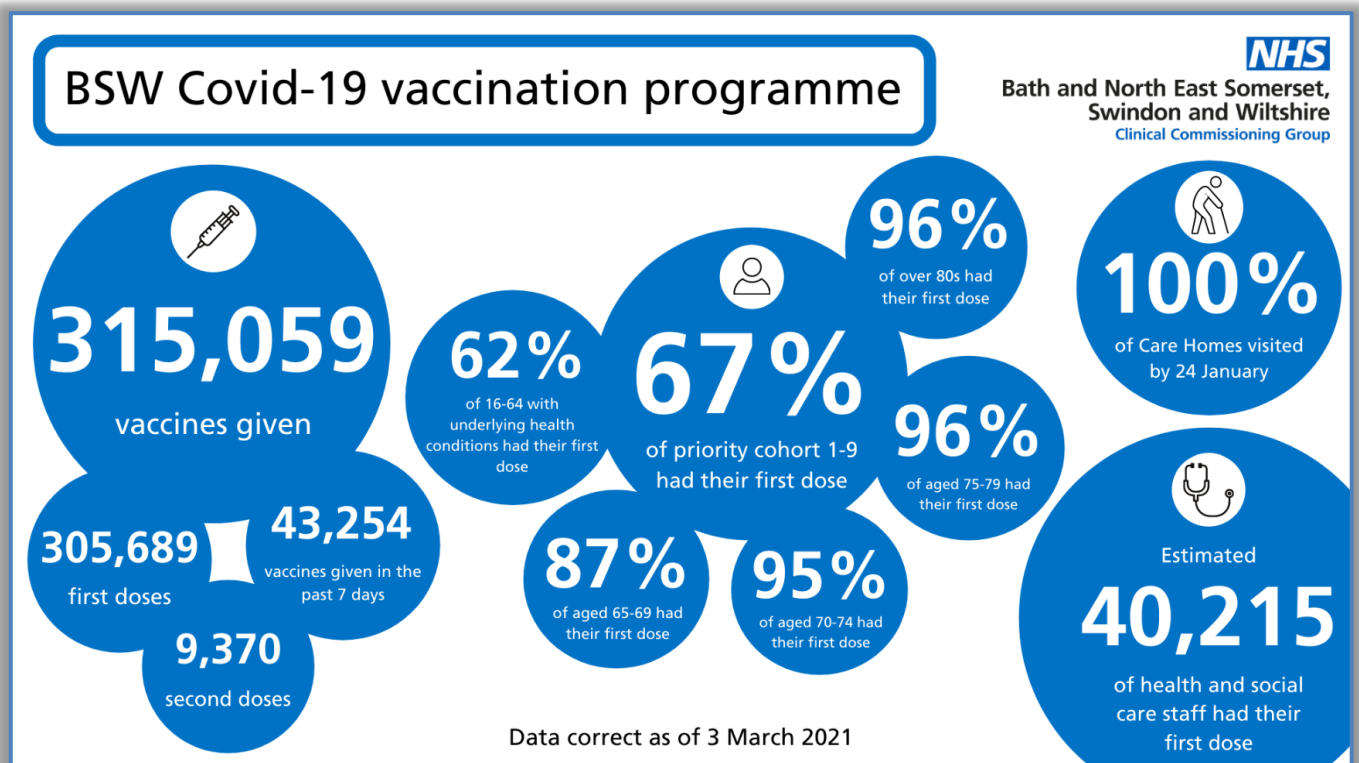
“It is incredibly important for us to hear from people from all walks of life, and I hope you can help us to promote this event to your respective audiences.”

### At a glance: the latest coronavirus vaccine developments in BSW

- In the seven days to Wednesday 3 March, our vaccination teams carried out more than 43,000 vaccinations, which took our overall total past the 300,000 mark
- This continued momentum means we have almost completed the vaccination of people in priority group five, and puts us firmly on track to complete the vaccination of people in priority group six this month

- We know that as the vaccination invitation list is widened, we will need to increase capacity. This may involve the introduction of new vaccine sites, as well as exploring the option of administering the vaccine in different ways, such as introducing drive-thru vaccine sites
- Patients who are due to have surgery that requires an overnight stay within the next four weeks will be prioritised and offered a vaccine ahead of their admission to hospital
- We are looking at establishing a vaccinator training programme which, when up and running, will ensure we have a large pool of clinically-trained staff who are able to carry out vaccinations
- Health and care staff across the region who are currently awaiting their second dose will soon be able to book their appointment via a dedicated online booking system
- We have responded to reports of apparent queue-jumping by issuing a warning that any person found to not be currently eligible for the vaccine, but falsely claiming to be so, will be turned away from the vaccination centres

### Vaccination programme to date



### Devizes Air Quality and Transport Strategy Group Meeting

Tuesday 16<sup>th</sup> February 2021, via Teams

**Notes:**

Present: Cllr Richard Gamble (Chair), Cllr Peter Evans, Martin Aldam, Gary Tomsett, Andrew Jack, Jason Salter (JSa), Phil Grocock (Wiltshire Council); Martin Reed, Richard Ormerod, Jasper Selwyn, John Schofield (JSc) (Sustainable Devizes); Philippa Morgan (Trust for Devizes); Nigel Carter, Kelvin Nash, Ian Pennington, Simon Fisher (Devizes TC)

Item	Notes	Action
1. Apologies	None. Kate Freeman stepped down from the group following the previous meeting in December.	
2. Minutes of last meeting 15 <sup>th</sup> December 2020	RG asked for any changes or comments on the notes from last time. There were none.	
3. New cycle parking within Devizes town	<p>SF began by saying he understood the need for cycle parking but wanted to understand what initiatives this group wanted DTC to take. He explained that the current seating in the marketplace has been very popular and DTC wishes to continue this and are looking at installing temporary cycle parking at the marketplace for summer 2021.</p> <p>RO said how this had come from the cycling survey from summer 2020 and two issues arising for cyclists: safety whilst cycling on the road and having safe and secure parking at destination. The survey showed a need for more cycle parking in well supervised areas of town. Some of the current parking was felt to be unsafe due to being in areas of low footfall or out of the way, giving thieves an opportunity unseen.</p> <p>Sustainable Devizes' idea is to include parking spaces in well-frequented parts of the town – Maryport St, marketplace.</p> <p>It was agreed that the standard 'Sheffield hoop' design did not compliment the conservation areas and heritage aspect of Devizes. PM had found alternative designs that might be more appropriate.</p> <p>Suggestions for new locations included at The Brittox near the litter bins or benches, so as to not fill the space and create more obstacles. At the other end, near Britton News close to the bollards. At the marketplace near the bus stops and by the fountain. RO was happy with the idea of temporary parking as SF described.</p> <p>NC wanted to understand about security. Do new locations need to be covered by the town's CCTV, or in areas of high footfall? He asked if the idea is to install locked cycle cabinets? JSc pointed out cyclists like to park near to their destination. If they stop for a coffee, they like to keep an eye on their bike. This is especially true for tourists. MA followed up on NC's point; hoops sprinkled about a town allow cyclists to pop into many different shops quickly. Cycle cabinets tend to work best at e.g. rail stations, where cyclists leave their bikes for long periods. They do not work well in towns where they can be taken over by someone storing a bike or other items permanently. He confirmed parking works best in a well trafficked area to keep an eye on the bikes. CCTV is okay</p>	

	<p>but not necessary.</p> <p>PE wanted a suggestion from cyclists / Sustainable Devizes on where new parking should go for DTC to be able to discuss and decide.</p> <p>SF described the company DTC is working with over Streetscene work in town who will create the temporary cycle parking for the marketplace.</p> <p>RO liked the idea of the temporary parking to test out locations and whether they are used or if residents object. He asked if DTC would consider cycle parking attached to their buildings? NC was happy to consider this but pointed out many are shops with glass frontages. SF pointed out several reasons why this may not be suitable.</p> <p>PM said that Trust for Devizes would be happy with the temporary solution but would like to see this made permanent as soon as possible.</p> <p>JSc was happy to create a map of locations and pass to DTC.</p> <p>RG asked about possible funding? SF said that DTC has put money aside for the work in the summer, including the temporary parking but there is no budget for permanent cycle parking.</p>	<p><b>JSc</b></p>
<p>4. Update on Devizes bus services (JS)</p>	<p>JSa updated the group with news about public transport for Devizes town and the wider area.</p> <p>The bus network is currently operating at 40% of normal volumes due to Covid-19 restrictions, people working from home and being cautious of using public transport.</p> <p>Bus passes can now be used before 9.30am until schools go back.</p> <p>The bus industry is currently propped up by government subsidy and it will be tricky to ween off this subsidy.</p> <p>The Devizes town bus service has been re-tendered and awarded on a short, 2-year basis. This has involved S.106 choices and keeping an eye on the green agenda. Faresaver will begin new contract from 1<sup>st</sup> March. Under the Better Deal for Buses, Wiltshire received £671k in March 2020 to enhance services or restore lost ones</p> <p>There is a further £1.2m for demand responsive transport and will enhance the Connect2Wiltshire further up towards Marlborough and out to Devizes. This is at the verification phase.</p> <p>The National Bus Strategy is a roadmap for buses and will be published in next few weeks. The government is subsidising the bus industry by £27m per week.</p> <p>There is £550k of S.106 funding for buses, some of which is for Devizes Community Area. JSa will come up with a table of schemes for routes including an outline and costs to spend the S.106 allocation over the next 3-5 years.</p> <p>NC asked about Lay Wood and S.106 monies. PG replied that the Lay Woods development is in 2 parts. The 1<sup>st</sup> part of the estate is within walking distance of the 49 route and that service into Devizes town. The 2<sup>nd</sup> part of the estate, as of 12 months ago, is still being built. To extend the town service into Lay Wood, a 3<sup>rd</sup> vehicle would be needed and need to work out how best to integrate this into the service – it would spend a lot of its time stationary. Need to speak to Faresaver about how best to set their driver times. So there are no plans yet as most residents are still within walking distance of the 49.</p> <p>JSc asked about the town bus. If Faresaver have a 2-year contract, when will planning to re-new / re-tender it start? If it is a good service, it will</p>	

	<p>encourage people to use it and make good use of 3 buses.          Connect2Wiltshire – lots of work went into planning this for Pewsey Vale. Sad to think this is lost.          JSa felt the future for buses is up in the air due and very hard to plan right now.          PG mentioned that the 49 is currently hourly but PTU is looking at running this half-hourly. The link from Devizes town to Lavington School is hard with using public funding to take students from the town with a secondary school out to another school.          The town network needs to be re-planned in order to take in the new health centre. The north and east of the town do have access.          Shortening the loops will reduce access. PG asked how often people will need to go to the new health centre and what service it will provide? He needs to better understand this demand.          It was recognised the post-Covid demand on public transport will be very different than before. With jobs having been lost, may need to improve links to nearby places with employment e.g. Bumpers Farm, Chippenham. There is a need to understand barriers to employment from local towns. Connect 2Wiltshire drivers are seeing new passengers on journeys but currently not seeing regulars.          JS pointed out that being hourly, the 49 is not attractive to residents at Lay Wood. He was hoping route would be ready when the estate was complete.          PG referred to the 1A and 1C across town.          RG asked about links to Salisbury. To make a commercial link to Stonehenge and connect to Wiltshire Museum and, via 49, to Avebury would connect the whole heritage experience. PG responded that the review begins by asking if the service can run commercially. They did not feel this could make it. The service would have to speed up and miss South Newton, although this village has high passenger numbers.          RG asked about community bus networks and forming a starter group to liaise with operators. JSa replied that the National Bus Strategy will be very heavy on bus networks and they will become local authorities' responsibility.          RG thanked JS and PG for attending.          JSa has an action to come back with a draft table of bus schemes for comment by this group.          PE mentioned that Devizes LINK is not currently operating due to Covid-19 but they want to re-open and will serve the health centre.</p>	<p><b>JSa</b></p>
<p>5. New cycle routes within Devizes and linking to villages (MR)</p>	<p>MR updated on two cycle routes being looked at:          The Devizes to Potterne route using bridleways will need to be put on hold. The Rights of Way team cannot get on site to cost up work, due to Covid-19 restrictions. MA confirms they are currently contacting landowners and starting to look into possibility of route. The route on the London Rd as a segregated route will be looked at by Atkins as a study. MA confirms the brief has gone to Atkins and Highways are waiting for them to respond.          JSc mentioned the segregated path on London Rd and the need to look at other options. He described a scoring system for cycle routes and how it applied to a number being looked at here. He described a route from the Lay Wood area to Devizes School using residential area and off-</p>	

	<p>road routes that gave a higher score than anything else being looked at. MR discussed why London Rd is being concentrated on and listed to housing, employment and schools that are all along that route. The towpath is being discounted as it would bring cyclists into conflict with other users.</p>	
<p>6. Report on Devizes Air Quality data and Wiltshire Air Quality Strategy &amp; Action Plan (GT)</p>	<p>GT stated that the action plan is in progress but is not yet published. There are currently some issues with Atkins. Defra has now tidied up their AQ website to better show AQMAs.</p> <p>Wiltshire Council is still collecting accurate data. GT mentions guidance for developers and AQ which will be useful to them.</p> <p>Wiltshire's data is currently being ratified before being published. GT showed a graph of AQ across Wiltshire. All areas in Devizes have complied with levels due to Covid-19 and reduced traffic. Defra has agreed that AQMAs cannot be revoked due to 2020 data which will show artificially low levels. Almost all areas within Wiltshire, bar two, will be low and comply.</p> <p>RO asked about January figures and GT discussed changes across the year.</p> <p>MA mentioned figures for Mason's Lane in Bradford on Avon and the 1-way system in place there. He is interested to see the effect of that.</p> <p>GT mentioned the effect of woodburners on AQ.</p> <p>For the AQ action plan, there will be modelling undertaken and he is in discussion about that.</p>	
<p>7. Report on S106 finances (MA) and CIL finances</p>	<p>MA reported there is no change in the levels of funding.</p> <p>He asked about the £10,000 allocated towards the business case study for Devizes Gateway rail station. RG replied that this is in case further funding is needed towards the outline business case. If this is successful and the project moves ahead, there will be a considerable amount needed for the full business case and other supporting documents.</p>	
<p>8. AOB</p>	<p>There were no items of AOB.</p> <p>RG thanked everybody for their work towards this group. Both he and PE will be stepping down as Wiltshire Councillors at the election in May, so this was their last meeting with the group. RG felt the group had made good progress.</p> <p>PE added his thanks too after the many years he has been on this group.</p>	
<p>Next meetings</p>	<p>Dates for futures meetings have not yet been set.</p>	



Devizes Community Area Transport Group – 16<sup>th</sup> February 2021 – Notes

	Item	Update	Actions and Recommendations	Who
1	<b>Apologies and Attendees</b>			
		<p><b>Apologies:</b> Stan Jonik (Erlestoke PC)</p> <p><b>Present:</b> Judy Boyt, Chris Saunders (Easterton PC); Julia Ford, Dominic Muns (West Lavington PC); Kelvin Nash, Chris Greenwood (Devizes TC); Peter Cadwgan (Cheverell Magna PC); Rebekah Jeffries (Rowde PC); Sue Ivey, Wesley Parfitt (Little Cheverell PC); John Mann (Potterne PC); Richard Slack (Worton PC); Richard Gamble, Peter Evans, Gareth Rogers, Richard Dobson, Andrew Jack (Wiltshire Council).</p>		
2	<b>Notes of last meeting</b>			
3	<b>Financial Position</b>			
		<p>Budget Available - <b>£2980.16</b></p> <p>Note: Order Values are subject to change</p>	GR pointed out invoices are on the way to parish councils for their contributions towards schemes.	
4	<b>Social Distancing</b>			
		<p>To consider whether the group wish to implement any social distancing schemes inline with the suggestions put forward on the attached Spread Sheet.</p> <p>RG asked if this item could be left to the end of the meeting and the group agreed.</p>	RG asked the group if there were any suggestions or priorities. There were none.	
5	<b>Top 5 Priority</b>			

	Schemes			
a)	<p><b>Issue 6120</b>  <b>Lydeaway - Request for speed limit reduction</b>  <b>(Priority No.01)</b></p>	<p><i>The speed limit or rather the lack of on the A 342 road between Lydeaway and Stert village entrance. When exiting the entrance of The Clock Inn Park the visibility is poor in both directions. Seeing that a lot of money has been spent on the work carried out in recent months on the renovation of the pathway between The Clock Inn Park and the entrance to Stert village which means more of the people from The clock Inn Park are using the pathway some of which have mobility scooters are finding it very difficult in crossing the road because of the speed of traffic which in some cases is in excess of the 60 miles per hour limit. In the last year there has been one accident of a car exiting The Clock Inn Park which in this case no one was hurt the police were not informed but both cars were written off. There are slow signs on the road and also illuminated 'slow down' signs before the 's' bends and the entrance to Stert village these do not seem to be effective.</i></p> <p>Stert PC have confirmed a contribution of £500 to the request.</p> <p>Atkins have completed the Speed Limit The assessment has concluded that a 50mph restriction can be considered. Indicative cost £6,000</p> <p>Stert PC had increased their contribution from £500 to £1,000, which for a parish of that size is a large amount. RG to check this is correct.</p> <p>This appeared to be towards the cost of the speed limit review and not towards implementation in the ground. RG asked the group for views but there were none. RG asked the group to vote on requesting a further contribution of £500 from Stert PC and CATG agreed to this request.</p> <p>Currently awaiting decision on whether to proceed with implementation.</p>	<p>There was no one from Stert PC present.</p> <p>RG raised the issue of Stert PC contributing £500 towards an implementation cost of £6,000. GR confirmed that the change in speed limit from this scheme might produce a reduction of actual speeds of 2-3mph.</p> <p>There was agreement within CATG that they expect a greater contribution from Stert PC towards the implementation.</p>	
b)	<p><b>Issue 5964</b>  <b>Devizes, Rotherstone Speeding</b>  <b>(Priority No.02)</b></p>	<p>Initial issue description:</p> <p><i>The roads in Devizes SN10 2BJ area, Avon Terrace from Shopmobilty to Rotherstone cemetery is used as a race track. The speeds people do is ridiculous. I've spoken with few residents and all are for a speed watch group to happen. Its recently turn to 20mph but people are speeding more mounting pavements. Won't be long before some gets serious hurt.</i></p>	<p>GR said this is making progress. The report is with the Cabinet member for Highways for a decision. This will take 10-15 days for approval to proceed. The next stage is the implementation of the scheme.</p>	



		<p>Open meeting held to discuss options. Town Council sent out follow up consultation questionnaire to all residents and following the results of this have sent a response stating that:</p> <p><i>"The Town Council supports a resident's request for Rotherstone to be made a no through road with one end being closed to motorised traffic and would ask the Community Area Transport Group to undertake the necessary work to determine the most suitable location for the closure for a viable of the scheme"</i></p> <p>Devizes TC have confirmed support for proposal and requested that the proposal proceeds.</p> <p>Initial Discussion with Police has indicated continued support with the condition of a physical feature enforcing restriction. Development costs - £3,000. KN confirms DTC's contribution towards the project.</p> <p>TRO has been advertised and comments have been received. Devizes TC have confirmed continued support for the proposal. Report for Cabinet Member has been drafted and submitted, and awaiting decision.</p> <p>Implementation costs estimated at £6,000. Devizes TC to contribute 25%.</p> <p>Invoice for contribution to TRO / Development to be issued shortly – Value £725.</p> <p>Next action is to implement – Anticipated April / May.</p>	<p>PE was glad to see this concluded but still with safety work to do.</p>	
<p>c)</p>	<p><b>Issue 6-19-02</b> (Previously known as Issue 6569)</p> <p><b>Footway at Tanis, Conscience Lane, Rowde</b></p> <p><b>(Priority No.03)</b></p>	<p>RJ asked about the Issue (6569) recorded to create a new footway from houses at Tanis on Conscience Lane to the A342. The parish council supports this request.</p> <p>An initial ballpark estimates of £6,000 provided to enable development of scheme. Awaiting RPC to confirm acceptance of need to contribute 25% of the development costs, ahead of 2020/21 Substantive CATG Bid.</p> <p>Rowde PC now confirm their 25% contribution</p> <p>Initial discussion with BT for Service diversion has indicated costs of circa</p>	<p>GR described this scheme is now beyond the CATG budget so is going towards the substantive scheme. Bids to this open in June / July and there will then be a wait for the outcome of that bid. GR gave a rough cost estimate of approx. £30,000. RJ was grateful this is still on the list and moving towards the bid.</p>	

		<p>£30,000. Alternative solution being discussed with WC Estates to dedicate some of adjacent field and relocate hedgerow ongoing.</p> <p>CATG confirms this can stay on the list of projects and can still go towards future Substantive CATG bid in 21/22. Anticipated that bids will need to be submitted June / July.</p>	<p>She pointed to new development within the village that seems to be aimed at Conscience Lane, making the footpath even more important.</p>	
d)	<p><b>Issue Ref: 6-19-01</b></p> <p><b>Potterne</b></p> <p><b>Proposed Traffic Calming Measures</b></p> <p><b>(Priority No.04)</b></p>	<p><i>Proposed traffic calming measures for A360, Whistley Road, Worton Road Court Hill</i></p> <p><i>See attached documentation detailing suggestions:</i></p> <ol style="list-style-type: none"> <li><i>1. Retain existing Potterne village sign</i></li> <li><i>2. Start 30-limit at a suitable point on the long left-hand bend before the Potterne Wick junction.</i></li> <li><i>3. Install Village Gates close to the bus stop, shortly before the entrance to Eastwell Manor.</i></li> <li><i>4. Install a Vehicle-Activated Speed Indicator at the position of the present 30-limit sign.</i></li> </ol> <p>Initial site meeting between PC &amp; Wiltshire Council has taken place to discuss locations for Village Gates. Proposal is being prepared. Parish Council funding proposal.</p> <p>There has been a site meeting to look at locations for new white gates and these have been agreed. Potterne PC will pay 100% towards these once designs have been agreed. Design have been agreed and works order has been issued.</p> <p>Invoice to be raised to PC.</p>	<p>JM felt this issue is complete. The SID has been installed and the new white gates are due to be installed in 4-5 weeks. He was happy for this to be removed from the list.</p>	
e)	<p><b>06-20-08</b></p> <p><b>Market Lavington</b></p> <p><b>Spin Hill</b></p> <p><b>Request for NAL &amp; Post for SID</b></p>	<p>Speeding has long been an issue on Spin Hill. An up-to-date road traffic survey was recently undertaken on Spin Hill, the results from which should be received shortly.</p> <p>The Parish Council consider that the use of a Speed Indicator Device (SID) would be a practical and visible way of trying to address this problem, by highlighting speeds of on-coming vehicles and therefore prompting drivers to adhere to the speed limit. The Parish Council have earmarked funds within the budget to</p>	<p>GR said there had been an error with the contractor and the post had been installed in slightly the wrong location. Market Lavington PC are going ahead and trialling their SID there to see if it is effective. If not, the post can be moved to the</p>	

	<b>(Priority No.05)</b>	<p>purchase the SID (Evolis Radar Speed sign, sold by ElanCity). Financial assistance is please requested from CATG for the supply and installation of the NAL socket, and sign posts, and any temporary traffic management that may be required to enable the SID to be installed</p> <p>Installation has taken place, but some concerns regarding the position. MLPC are testing the location and if proves to be incompatible alternative solution will be actioned.</p> <p>Recommend issue is closed and removed.</p>	correct location.	
f)	<b>Issue Ref 06-20-01</b>  <b>Bromham</b>  <b>A342</b>  <b>Request for Village Signs.</b>  <b>(Priority No.06)</b>	<p><i>Due to the decline in village shops the Parish Council would like to request brown signs indicating 'Village Shops' to be located on the A342 at the Roughmoor Junction and Pound Junctions to indicate that there are shops in the village centre.</i></p> <p>Tourist Signs (Brown Signs) are not permitted for this type of feature, however traditional road signs can be considered to direct point to village amenities. CATG Agreed to prioritise, and a proposal drawing and budget estimate to be prepared.</p> <p>Project has been allocated and further information will be available in the New Year for the PC to consider.</p>	No one from Bromham PC was present and RG did not want to take this forward without hearing from Bromham.	
g)	<b>06-20-11</b>  <b>Little Cheverell</b>  <b>Low Road – HGV's</b>  <b>(Priority No.07)</b>	<p>Low Road, Little Cheverell is often used by HGVs as a shortcut to avoid the full diversion route via Great Cheverell designed to bypass the low railway bridge in Littleton Panell. However it is entirely unsuitable to HGVs as it is very narrow and has some sharp corners; as a result HGVs get stuck or cause damage. At present at each end of Low Road are traffic signs indicating 'prohibited entry to HGVs over 7.5T Except for access' and 'Single track road No passing places'. However, at around 01.00 hours on 4 August an HGV drove at speed along Low Road breaking off tree branches and demolishing part of a garden wall. This incident was but one of many over recent years. The present traffic signs are clearly not as effective as could be.</p>	WC Engineer (PR) met with SI on site recently and has put together a cost estimate for this work. GR needs the PC to agree to their 25% contribution, then this can be put into the system and programmed in. WP asked for the estimate cost and confirmed Little Cheverell PC will contribute that amount. RG asked CATG to agree to its	

		<p>Traffic signs indicating 'prohibited entry to HGVs', as have recently been installed at Edington, be installed at each end of Low Road.</p> <p>Little Cheverell Parish Council agree to contribute 25% cost of potential works.</p> <p>Site meeting has taken place with PC. Plan and cost estimate to be prepared and issued to PC by end of February.</p>	<p>75% contribution and this was passed. SI thanked Highways for their quick work on this.</p>	
<p>h)</p>	<p><b>Issue 6675</b> <b>A342 Bromham</b>  <b>(Priority No.08)</b></p>	<p><i>Bromham Parish Council would like to put in motion a speed restriction on the A342 from South of the Calne A3102 50/40mph speed restriction to the St Edith's Marsh 30 MPH restriction. This length of the A342 is now a 60MPH road with frequent occurring accidents which can be backed up by local police and a freedom of information request for the crash map information for accidents. This stretch of road starting at the Calne junction has the following: Farm shop, Residential properties, Chittoe junction - poor visibility. The Audi Garage, Residential properties, The A3102 Melksham junction with Collins Veg. Shop - minor accidents happen here on a regular basis not always police recorded- V P Collins Vegetables at 81 Devizes Road can support this. ACCIDENT SPOT; Double bends. ACCIDENT SPOT; New Farm and Digester entrance to A J Butlers Farm - between the double bends. Cross road junction to Highfield village centre and Roughmoor. Roughmoor 9 residential properties plus A J Butlers main Farm access and Open Reach telecom building. ACCIDENT SPOT; Cross road junction to Yard lane and The Pound village centre. ACCIDENT SPOT; Hawkstreet junction. A speed restriction has been requested on two previous occasions but without response. Bromham Parish Council ask that this request is seriously considered by that appropriate team.</i></p> <p>Speed Limit Assessment discussed at Nov 19 Meeting. Bromham PC to consider and advise if the wish to proceed with requesting a speed limit assessment. GR sent further information to PC 17.12.19. Awaiting BPC response on whether to proceed &amp; contribution.</p> <p>RH will have to check with BPC if they can contribute 50%. GR confirmed this can go ahead but report might not show what BPC wants to see happen.</p> <p>RH has confirmed that BPC are only prepared to contribute 25% of the</p>	<p>Again, with no one from Bromham present, RG wanted to skip this until Bromham can be represented. AJ will make sure Bromham PC know CATG needs their input into these schemes.</p>	<p><b>AJ</b></p>

		assessment cost. Decision required as to whether the group wish to proceed. Issue was placed on hold for Dec '20 meeting as no BPC Representative was in attendance. To discuss.		
<b>6.</b>	<b>Other priority schemes</b>			
a)	<b>06-20-18</b> <b>Market Lavington</b> <b>Request for Dropped Kerbs</b>	<p><i>There are several key locations in the village where the absence of dropped-kerbs means that anyone using a mobility scooter, wheelchair, or a pram, would find it impossible to manoeuvre on and off the pavement safely. This can either result in mobility scooter users having to make long detours to reach their destination, or having to use the road itself as a means of getting from one dropped-kerb to the next, which in some cases can be a significant distance away.</i></p> <p><i>In order to help ensure the safety of everyone using the pavements, the Parish Council would like to request the installation of a number of dropped-kerbs at key locations in the Village (document attached with details of proposed locations). Could we please ask that this matter be submitted via the CATG committee, with a request for support towards the cost and installation of the dropped-kerbs. The Parish Council recognises that it will be required to contribute to the final cost.</i></p> <p>5 Locations have been identified.</p> <p>FD spoke about 5 locations in the village where wheeled access is not good – there are places with old and unsuitable pavements. GR said that CATG could take this on and gave an estimate of £750-1,000 per dropped kerb. With an economy of scale, this could come to approx. £4,000 for the whole scheme. GR will need to take a look at each location.</p> <p>RG asked if CATG wanted to take this on? He is happy to put on priority list but that it does not need funding straight away.</p>	No one from Market Lavington PC was present to give comment. RG will raise with at the PC meeting on 16/02/21.	<b>RG</b>
b)	<b>06-20-21</b> <b>Devizes TC</b> <b>Request for 20mph</b>	<p><i>Access through this residential area is often used as a rat run, as it bypasses traffic congestion in New Park Street leading to rat run mentality. Commercial Road from the junction at the Sainsbury Mini Roundabout to Rotherstone, the whole of Couch Lane, the whole of New Park Road and the whole of Victoria Road all have high concentrations of pedestrian and frequent parking</i></p>	KN asked about how to move this forward, with four areas to be assessed. GR replied that CATG needs to agree to prioritise this work and allocate	

	<p><b>Limit – Area 3</b></p>	<p><i>manoeuvres, therefore a 20mph speed limit would be more appropriate for this area.</i></p> <p><i>We would call this Zone Three, 20mph speed limit. See attached plan</i></p> <p>KN spoke about how Devizes TC had looked at assessing the whole town centre for 20mph and wanted to know that CATG was happy with this and GR is in the conversation.</p> <p>RG asked about a contribution. GR has spoken to Simon Fisher about this and recommended splitting the request into 4, hence the several requests here.</p> <p>RG asked if CATG is happy to put 75% of costs to the assessment for the entire area. KN is happy with this.</p> <p>There were concerns about the cost of implementation, especially for such a large area. GR said this could be broken down into stages, although there was a risk some costs, such as adverts, might be repeated if that was the case.</p>	<p>funding. This meeting has freed up some priority slots. GR described that the four areas can be combined and assessed together, for a single amount, but if they are all found to be suitable for 20mph, then the cost of implementation could be £10,000's. RG felt this work effects the largest population and is worth taking forward. KN felt the assessment can be done at once, then implementation could be done over several years.</p> <p>PE commented that Church Walk has already been approved. GR pointed out this was by Metrocount not the full assessment.</p> <p>RG asked CATG to agree funds for the 20mph assessment (£2,500) and the group agreed to make the whole area a priority.</p> <p>GR said it will take a while to develop the assessment covering the whole area and carry that out.</p>	<p><b>GR</b></p>
c)	<p><b>06-20-22</b></p> <p><b>Devizes TC</b></p> <p><b>Request for 20mph Limit – Area 1</b></p>	<p><i>Long Street, St Johns Street, the Highstreet, Market Place and Station Road are access to the town centre but are often used as a rat run, as it is shorter route to get through the town than preferred arterial route of New Park Street, which in turn leads to a rat run mentality. All these roads have high concentrations of pedestrian and frequent parking manoeuvres, therefore a 20mph speed limit would be more appropriate for this area.</i></p> <p><i>We would call this Zone One, 20mph speed limit. See attached plan</i></p>	<p>This is covered by b) above</p>	

d)	<b>06-20-23</b> <b>Devizes TC</b> <b>Request for 20mph Limit – Area 2</b>	<i>The whole of Bridewell Street, the whole of Hare and Hounds Street, the whole of Sheep Street, the whole of Sidmouth Street, the whole of Maryport Street and the whole of Monday Market Street are either within the main shopping area of the town or are the feeder road into this area and as such all have high concentrations of pedestrian and frequent parking manoeuvres and therefore a 20mph speed limit would be more appropriate for this area. We would call this Zone Two, 20mph speed limit. See attached plan</i>	This is covered by b) above	
e)	<b>06-20-24</b> <b>Devizes TC</b> <b>Request for 20mph Limit – Area 4</b>	<i>There has been a 20mph zone implemented for the Brickley Lane area for time, however Church Walk was missed off that scheme. It meets all the same criteria as Bickley Lane and is a feeder road into this wider scheme, therefore we believe it should have its speed limit reduced to 20mph. We would call this Zone Four, 20mph speed limit. See attached plan</i>	This is covered by b) above	
<b>7.</b>	<b>Outstanding / Open issues</b>			
a)	<b>Issue 6736</b> <b>Market Lavington;</b> <b>Ledge Hill /</b> <b>Broadway</b> <b>Request for speed limit reduction</b>	<i>Cars driving too fast down Road that we live on Location Spin Hill Broadway Market Lavington SN10 5RH Cars and motorbikes speed up coming down hill to sometimes 70-100 miles an hour... the road bends in parts is relatively a short length of Road with a very dangerous junction at the end known as black dog junction where drivers have to stop. Currently the speed limit is 40 turning into 60 miles an hour - which does not make sense considering there are 6 residential homes various offices and businesses with vehicles entering and exiting throughout the day. There have been various incidents in the last 2 years... two cases of cars losing control driving into my gateway and telephone poll - causing a loss of telephone service and internet for 7 days - also the spot where my children have to stand waiting for their school bus - if they had been there they would have been killed 2 cars driving into the ditch where they have lost control on a bend a collision between two cars as one was leaving a small lane and visibility is difficult caused by car driving too fast down the Road. These are the only ones I have witnessed and I am sure there have been more. And more recently my neighbour walking her dog was killed - both herself and large Labrador were both killed. We are still waiting to fully find out the full story but knowing where it happened I have witnessed many drivers going too fast around a difficult bend - I am sure it was down to negligent driving. It also does not make sense that such a small Road with bends throughout with residencies businesses</i>	RG felt speed might not be the principal issue here.	<b>RG</b>

		<p><i>etc. is marked as a national speed limit when the main Road from Devizes to Lavington is at 50 miles an hour Currently it is too dangerous for us to walk outside our home - even mowing my lawn is dangerous we are unable to walk to our local village which is just up the road.</i></p> <p>Awaiting information as to whether this is supported by the Parish Council</p> <p>Police investigation was concluded, and Coroner Inquest held (May 2019). No recommendations to the Highway Authority made.</p> <p>IM described the different speed limits at Ledge Hill, the accidents and it has no footpath. Residents have asked for a speed limit reduction all along length. In particular, there is a need to reduce the 40mph to 30mph, followed by the 60mph to 50mph. He asked the group to consider this.</p> <p>RG asked if there is space for a new footpath? With development happening there, money could be found to create this. IM said that this has been looked at, but he was not aware of the findings.</p> <p>FD mentioned ideas like permissive paths for walkers and the PC is working with CATG towards a new 40mph limit at the bottom of Ledge Hill. Residents there feel 60mph is not appropriate and want it reduced. There are 13 businesses and 8 residential properties there. FD wanted this left on as this is desired when an opportunity arises, and funding becomes available.</p>		
b)	<b>Issue 6881 A342 Lydeaway, Planks Farm Speed Limit reduction request.</b>	<p><i>As a safety measure to prevent death or serious injury we would like the current 50 mph reduced to 40mph as we believe that a contributory factor to the serious accidents which have already occurred is the speed. A cost-effective solution of reducing the speed limit by 10 mph will not stop those that speed regularly but even regular speeders are reticent to go very far above set limits. We suggest that the area of the A342 be from Lydeaway past Wedhampton to Chirton. This section of road has very tight bends and highly used junctions. This small measure we believe will lessen the chance of a fatality along this section of the A342.</i></p>	This is linked to issue 6120 as discussed above. CATG agreed to move on.	
c)	<b>Issue Ref 06-19-11  Potterne</b>	<p><i>Improvements require to previously agreed formal crossing</i></p> <p><i>Request the junction with the A360 &amp; Blount's Court is altered with the</i></p>	JM said that Potterne PC is still discussing but want these issues to stay on the list.	



	<p><b>Blounts Court Request junction altered to form a Mini-Roundabout</b></p>	<p><i>introduction of a min-roundabout and associated kerb line alterations. This will enable alterations to be made to the crossing point to improve visibility for pedestrians crossing in the vicinity of the George &amp; Dragon PH.</i></p> <p>GR confirmed that the issue has been logged. It will be for the PC to prioritise their schemes given the budget availability. PPC have done so and will revisit the scheme in due course once other priorities have been concluded.</p> <p>JM felt nothing can be done at the moment. He asks for any ideas for solutions from CATG about the pinch-points and speeding within the village.</p>		
d)	<p><b>06-20-05</b></p> <p><b>A360 Potterne High Street</b></p> <p><b>Priority working system</b></p>	<p><i>Concern regard safety of pedestrians crossing the A360 at the informal crossing site between Blount's Court and the George and Dragon Public House due to poor sight lines and a lack of signage. Porch House is a Grade 1 listed building and despite a barrier in front of the building, it has been hit by passing lorries on several occasions.</i></p> <p><i>Considerable discussion has already taken place on various ways to improve pedestrian safety, particularly at the Blounts Court to George &amp; Dragon crossing, and to protect Porch House from damage by vehicles while also improving its environment.</i></p> <p><i>An option to improve both issues is to build a pavement from the Blount's Court crossing site to Porch House and move the crossing site to outside Porch House. To do this a more substantial protective 'island' could be created outside Porch House and on the opposite side of the High Street to form a safer crossing site across the A360. This would necessitate a one lane priority system but that would also help with traffic calming and the new pavement would improve the safety of vehicles exiting from Coxhill Lane (which is especially busy in the Summer because of the large, thriving cricket club).</i></p> <p><i>The loss of some parking places on the High Street would need consideration.</i></p> <p>RG will speak with John Mann of PPC. He felt this cannot be solved by CATG within its budget.</p>	<p>JM said that Potterne PC is still discussing but want these issues to stay on the list.</p>	

e)	<p><b>06-20-06</b></p> <p><b>A360 Potterne / Potterne Wick Junction</b></p>	<p><i>Sightlines at the A360/Potterne Wick junction are poor for those exiting the junction onto the A360 north-bound and traffic waiting to turn onto Potterne Wick from the A360 north-bound stands a good chance of being hit from behind due to poor sightlines around the bend in the A360.</i></p> <p><i>Discussion on this matter has already taken place, and it is possible that a mini-roundabout would alleviate the problem.</i></p> <p><i>We will continue discussions, with a view to placing concrete proposals at the next CATG meeting.</i></p> <p>RG will speak with John Mann of PPC. He felt this cannot be solved by CATG within its budget. JM felt the Potterne Wick issue was separate. GR suggested cutting the foliage to improve sight lines and this has been discussed with the landowner. A mini roundabout was suggested. This can stay on the list to keep looking for solutions.</p>	<p>JM said that Potterne PC is still discussing but want these issues to stay on the list.</p>	
f)	<p><b>06-20-14</b></p> <p><b>Rowde</b></p> <p><b>Springfield Road</b></p> <p><b>Request for Children Warning Sign</b></p>	<p><i>Nature of Issue: Residents have requested a 'Children playing' road sign for Springfield Road, just before the junction with Wheeler Place.</i></p> <p><i>Cars drive too fast and recklessly. The back entrance to Rowde Primary school is off Silverlands Road/Springfield Road and it is used by many parents in cars to pick up and drop off their children. There are a lot of children also living in the area that play out in the nearby park and are constantly crossing the road, backwards and forwards.</i></p> <p><i>The Parish is willing to pay for the sign but is seeking Highways permission for it to be erected.</i></p> <p>RJ describes the parking situation with parents at school times plus residents throughout the day. It is felt there is a need to warn drivers and for traffic calming. The PC is prepared to pay 100% towards this. GR gives some comments- the area has a 30mph limit and is in a residential area. Highways do not recommend warning signs in this environment. He thought that residents and parents should know the situation and about the school and already be driving accordingly. Remove from list?</p>	<p>RJ was happy for this to come off the list.</p>	

g)	<b>06-20-16 Bromham</b>  <b>Request for Street Lighting</b>	<p><i>In a recent survey the footpath across the Pound allotments - the only footpath from the Pound to the village, is the most used footpath in the village, used by parents and school children, parishioners including residents on buggies from Angell House going to the village shops/centre. It was also highlighted and requested that additional lighting is required. This footpath is across allotment ground a good ½+ mile long with only 3 lights - one at the entrance and 1 at each of the right angles in the path. Trees near the lights also block the light on the path, and the old lights (although just been replaced) were constantly off for periods of time until repaired.</i></p> <p><i>The Parish Council therefore would like to request a need for additional lighting.</i></p> <p>GR has looked at this location; it appears to be a footpath across fields. GR felt there could be landowner issues about access and installation. RG suggested going back to Bromham PC. GR thought this would end up coming back to CATG and recommended leaving it on the list and speaking with the PC.</p>	<p>Again, with no one from Bromham present, RG wanted to skip this until Bromham can be represented.</p>	
h)	<b>06-20-17 Bromham</b>  <b>Request for Pedestrians in road Warning Sign</b>	<p><i>A request for new signs at the Pound and Horsepool to make drivers aware that there is no footpath/pedestrians in road?</i></p> <p>RG said he would consider a sign. GE gave an estimated cost of approx. £500. If Bromham PC was to offer 100%, it could be considered.</p> <p>RG wanted to wait until Bromham PC was present.</p>	<p>Again, with no one from Bromham present, RG wanted to skip this until Bromham can be represented.</p>	
i)	<b>06-20-20 All Cannings</b>	<p><i>Traffic exits the well-used Village Hall &amp; Community Shop car park from a blind junction &amp; there have been near misses with other traffic &amp; pedestrians as it emerges onto the village street. The Parish Council have received complaints that some traffic is exiting without due care.</i></p> <p><i>The Parish Council is requesting a meeting with a Highways Engineer to get a professional opinion whether traffic calming or other suitable traffic management options on the highway would work in this location ahead of any</i></p>	<p>GR has spoken with the PC already. RG pointed out that after the elections in May, All Cannings will move more to Pewsey community area.</p> <p>GR thought that if a project is already underway, the PC will keep attending the “old” CATG</p>	

		<p><i>appropriate request for such measures to CATG.</i></p> <p>AG described the situation where the community shop is becoming busier and there is a worry there could be an accident with vehicles leaving the car park and due to poor sight lines, hitting a pedestrian. She asked for a site visit to carry out some kind of safety audit and to give advice.</p> <p>GR knows the situation. He felt it is down to the shop or village hall to make safe but recognised it is difficult. Traffic calming here is not appropriate. AG asked about a mirror opposite, but GR gave reasons why these are not recommended. AG asked if Highways can insist on the wall coming down. GR asked if warning signs could be put up in the car park but AG felt it was already becoming cluttered.</p> <p>RG asked if a meeting could be set up for the new year to make recommendations. It was agreed to leave this on the list.</p> <p>ACPC have made contact with GR to discuss and once restrictions are relaxed a meeting will be arranged.</p>	<p>until the project is complete as well as the CATG for their new area.</p>	
<b>8.</b>	<b>New Issues</b>			
a)	<p><b>06-21-01</b></p> <p><b>Close Lane, Rowde</b></p> <p><b>A342</b></p> <p><b>Concerns regarding bend.</b></p>	<p><i>This has been previously raised through CATG and it was agreed to look at this area when Rowdeford School has been expanded. However, there has been another very serious road traffic accident on this bend (31/12/20) whereby the bollard has been damaged again and the car ploughed into the residents' fence and garden. The resident was in the garden at the time but remains unhurt.</i></p> <p><i>The resident has obtained legal advice to say: "I would be grateful if you would raise the issue with them (Wiltshire Council) once again and you might also like to inform them that, according to the legal advice I have taken, their repeated ignoring of a demonstrably dangerous situation, where there is the very real danger of serious injury or loss of life to individuals who they have deliberately chosen not to protect, is tantamount to negligence".</i></p> <p><i>We are looking for something that will act as a barrier from the road to this resident's property. We do not know what would be appropriate but the Parish Council could consider covering the costs for the work depending on how expensive it is.</i></p>	<p>RJ agreed to take this off the list. She reported another accident there on New Year's Eve, so the resident has asked that this is raised again. There were a number of actions agreed at the last meeting for RD to pick up, such as cutting back foliage and checking signage.</p> <p>RJ said that the Chevron sign is requested on My Wilts and is with RD.</p>	<b>RD</b>

<b>9.</b>	<b>Other items</b>			
a)		<p>JM asked about the white lines of a zebra crossing within Potterne and that they are being rubbed out and are less visible. He reported several 'near misses' had happened. RD has said the lines will be replaced but this cannot happen until better weather conditions later in the year. GR said he had nothing to add. The combination of black/white pole, flashing lights and the black/white stripes all mark the location of the zebra crossing. RG asked if there is any appropriate warning signage that could go in. GR replied that since the crossing is within the 30mph limit, drivers should expect "urban" features such as crossings and warnings of them should not be necessary. JM pointed out this was first raised over a year ago and has not been done.</p> <p>CS asked about Kings Rd in Easterton. Apparently, this was on a list of C-class roads for surface treatment but the road has deteriorated so much this will not be sufficient and CS felt it needs structural work. GR said this falls under RD's work. It had to go to RD to look at and deal with. RD will nominate roads for greater work onto a countywide list. CS was happy with that approach.</p> <p>RG mentioned this was his last CATG meeting as he is standing down from Wiltshire Council in May. PE is also standing down. They both thanked the group for their work towards traffic matters in the area and the officers for their support in some very detailed tasks. JM is also standing down from Potterne PC and he also thanked GR for his work.</p>		<b>RD</b>
10	<b>Date of next meeting: To be determined.</b>			



<b>Report to</b>	Devizes Area Board
<b>Date of Meeting</b>	15/03/2021
<b>Title of Report</b>	Community Area Grant funding

**Purpose of the report:**

To consider the applications for funding listed below:

**Capital Funding**

<b>Applicant</b>	<b>Amount requested</b>
<b>Applicant:</b> Erlestoke and Coulston Cricket Club <b>Project Title:</b> New pavilion at Walled Garden	£5,000.00
<b>Applicant:</b> Wiltshire Museum <b>Project Title:</b> New boiler and temperature control	£2,262.13
<b>Applicant:</b> Devizes Town Council <b>Project Title:</b> Supporting independent businesses in Devizes	£2,405.00
<b>Applicant:</b> All Cannings Community Shop Society Ltd <b>Project Title:</b> New shop getting ready to build	£5,000.00
<b>Applicant:</b> Devizes and District Foodbank <b>Project Title:</b> New delivery van	£3,000.00
<b>Applicant:</b> Devizes Development Partnership <b>Project Title:</b> New CCTV cameras + move to new location	£3,144.73
<b>Applicant:</b> Avon Road Community Assoc. <b>Project Title:</b> New goalposts for Avon Rd Park	£804.95

<b>Total grant amount requested at this meeting</b>	£21,616.81
<b>Total capital funding allocated to Devizes Area Board 2020/21</b>	£50,372.00
<b>Total amount awarded so far, 2020/21</b>	£35,361.00
<b>Amount remaining if all grants are awarded as per report</b>	-£6,604.00

**Youth Funding**

<b>Applicant</b>	<b>Amount requested</b>
<b>Applicant:</b> Wiltshire Youth for Christ <b>Project Title:</b> New youth worker for Devizes area	£5,000.00

<b>Applicant:</b> The Bridge Project <b>Project Title:</b> Thrive Hub Worker in two Devizes schools	£5,000.00
<b>Applicant:</b> Potterne Youth Club <b>Project Title:</b> Potterne Community Garden Re-Generation	£2,700.00
<b>Applicant:</b> Area Board Initiative – Devizes School <b>Project Title:</b> Supporting students returning to school.	£4,700.00
<b>Applicant:</b> Area Board Initiative – Lavington School <b>Project Title:</b> Supporting students returning to school.	£4,700.00

<b>Total grant amount requested at this meeting</b>	£21,100.00
<b>Total Youth funding allocated to Devizes Area Board 2020/21</b>	£22,879 (including returned funds from 19/20)
<b>Total amount awarded so far, 2020/21</b>	£747.00
<b>Amount remaining if all grants are awarded as per report</b>	£32.00

## Health and Wellbeing Funding

<b>Applicant</b>	<b>Amount requested</b>
<b>Applicant:</b> Wiltshire Wildlife Trust <b>Project Title:</b> Natural Connections - Nature-Based Wellbeing Programme	£ 899.00
<b>Applicant:</b> Care Home Volunteers <b>Project Title:</b> Recruit, train & support volunteers	£456.50
<b>Applicant:</b> Wiltshire Service Users' Network <b>Project Title:</b> Devizes Walking Buddy Scheme	£900.00
<b>Applicant:</b> Alzheimer's Support <b>Project Title:</b> Supporting Sidmouth St Day Club	£900.00

<b>Total grant amount requested at this meeting</b>	£3,155.50
<b>Total Youth funding allocated to Devizes Area Board 2020/21</b>	£8,600.00 (including returned funds from 19/20)
<b>Total amount awarded so far, 2020/21</b>	£7,700.00



<b>Amount remaining if all grants are awarded as per report</b>	-£2,255.50
---	------------

## 1. Background

Area Boards have authority to approve Area Grants under powers delegated to them. Under the Scheme of Delegation Area Boards must adhere to the [Area Board Grants Guidance](#)

[The funding criteria and application forms](#) are available on the council's website.

## 2. Main Considerations

2.1. Councillors will need to be satisfied that funding awarded in the 2020/2021 year is made to projects that can realistically proceed within a year of it being awarded.

2.2. Councillors must ensure that the distribution of funding is in accordance with the Scheme of Delegation to Area Boards.

2.3. Councillors will need to be satisfied that the applications meet the Community Area Board grants criteria.

## 3. Environmental & Community Implications

Grant Funding will contribute to the continuance and/or improvement of cultural, social and community activity and wellbeing in the community area, the extent of which will be dependent upon the individual project.

## 4. Financial Implications

Financial provision had been made to cover this expenditure.

## 5. Legal Implications

There are no specific legal implications related to this report.

## 6. Human Resources Implications

There are no specific human resources implications related to this report.

## 7. Equality and Inclusion Implications

Community Area Boards must fully consider the equality impacts of their decisions in order to meet the Council's Public Sector Equality Duty.

Community Area Grants will give local community and voluntary groups, Town and Parish Council's equal opportunity to receive funding towards community-based projects and schemes, where they meet the funding criteria.

## 8. Safeguarding Implications

The Area Board has ensured that the necessary policies and procedures are in place to safeguard children, young people and vulnerable adults.

## 9. Applications for consideration

## Capital

Application ID	Applicant	Project Proposal	Requested
<a href="#">4050</a>	Erlestoke and Coulston Cricket Club	New pavilion at Walled Garden	£5,000.00
<p><b>Project Description:</b> The club's current pavilion has come to the end of its usable life and is potentially becoming unsafe. The new pavilion which is planned will enhance the already beautiful surroundings at the walled garden and will also enable the club to not only continue its cricket activities in a safe pleasant environment but also to make our facilities available for use by the wider community for functions meetings and events.</p> <p><b>Input from Community Engagement Manager:</b> This application will allow Erlestoke and Coulston CC to continue to provide cricket within the area, from a range of ages. The new pavilion will benefit the whole community as a new space to meet and socialise</p>			
<p><b>Proposal</b> That the Area Board determines the application from Erlestoke and Coulston Cricket Club for £5,000.00</p>			

Application ID	Applicant	Project Proposal	Requested
<a href="#">4116</a>	Wiltshire Museum	New boiler and temperature control	£2,262.13
<p><b>Project Description:</b> Wiltshire Museum urgently needs to replace its thirty-year-old boiler and insulate the ceiling of the temporary exhibition gallery. We are committed to being as carbon neutral as possible - a new more efficient boiler will reduce costs aid sustainability and enable us to spend more on achieving our mission of Sharing Wiltshire's Story with everyone. Having acceptable heating, insulation and moisture control is often a condition of lending art and heritage collections. Having this system in place could allow Wiltshire Museum in Devizes to host a greater range of exhibitions in future</p> <p><b>Input from Community Engagement Manager:</b> The new heating system will help meet the conditions of collections lenders and could allow more exhibitions to come to Devizes in future. It also meets Wiltshire Council's aims of lowering carbon emissions across the county and frees up the museum's resources to focus on more public-facing work than simply heating the building.</p>			
<p><b>Proposal</b> That the Area Board determines the application from Wiltshire Museum for £2,262.13</p>			

Application ID	Applicant	Project Proposal	Requested
----------------	-----------	------------------	-----------

<a href="#">4143</a>	Devizes Town Council	Supporting independent businesses in Devizes	£2,405.00
<p><b>Project Description:</b> Devizes Town Council is committed to supporting the High Street as the town comes out of lockdown. To do this it is vital to work in partnership with the town's diverse range of independent retailers who underpin the vibrancy of the town centre making it a great place to visit and shop.</p> <p><b>Input from Community Engagement Manager:</b> As Wiltshire and Devizes come out of lockdown restrictions, it is vital that our town centres return to a healthy and vibrant level. This application supports the town's independent businesses to attract and welcome visitors and shoppers to Devizes.</p>			
<p><b>Proposal</b> That the Area Board determines the application from Devizes Town Council for £2,405.00</p>			

Application ID	Applicant	Project Proposal	Requested
<a href="#">4161</a>	All Cannings Community Shop Society Ltd	New shop: getting ready to build	£5,000.00
<p><b>Project Description:</b> In the last few years the shop building, made from two portacabins twelve years ago, has had accumulating repair problems. The timber frame has started to rot and toilet and kitchen facilities for staff are inadequate. After a successful year supplying our local communities through the COVID-19 emergency we have found that we have insufficient storage and shelf space to meet demand in our local communities. This application will support the early stages of the project, including design, planning and survey fees.</p> <p><b>Input from Community Engagement Manager:</b> The shop at All Cannings has been a vital service for the village and nearby community during the past year when travel and the ability to shop has been limited. Creating a new shop through these initial stages will secure this service</p>			
<p><b>Proposal</b> That the Area Board determines the application from All Cannings Community Shop for £5,000.00</p>			

Application ID	Applicant	Project Proposal	Requested
<a href="#">4170</a>	Devizes and District Foodbank	New delivery van	£3,000.00
<p><b>Project Description:</b> Devizes and District Foodbank provides emergency food during crisis situations such as redundancy benefit delays or receiving an unexpected bill to those people</p>			

living in the Pewsey Marlborough and Devizes Community Areas. During the pandemic we have been mainly working to a delivery model using the foodbank van to deliver the emergency food boxes to individuals. The current van is 9 years old and has 164,000 plus miles on the clock. The foodbank is having to spend more on repairs and maintenance than before and it is no longer economical to run. They have taken the decision to replace it with a newer, slightly larger vehicle.

**Input from Community Engagement Manager:**

The foodbank provides a vital service in need of short-term support and food across the three community areas. During the pandemic they have moved to a delivery basis making a roadworthy and economical van more necessary.

**Proposal**

That the Area Board determines the application from Devizes and District Foodbank for £3,000.00

Application ID	Applicant	Project Proposal	Requested
<a href="#">4189</a>	Devizes Development Partnership	New CCTV cameras + move to new location	£ 3,144.73

**Project Description:**

Replacement of CCTV cameras and relocation of CCTV control room: this project will involve purchasing three new CCTV cameras to replace older ones that are no longer functioning. This project also includes to costs of moving the CCTV suite into new office accommodation.

**Input from Community Engagement Manager:**

Devizes' CCTV coverage provides vital support to Police colleagues and helps investigate crime and ASB within the town. The system also provides a high degree of re-assurance to residents and help combat fear of crime.

**Proposal**

That the Area Board determines the application from Devizes Development Partnership for £3,144.73

Application ID	Applicant	Project Proposal	Requested
<a href="#">4074</a>	Avon Road Community Assoc.	New goalposts for Avon Rd Park	£804.95

**Project Description:**

The existing posts are old and rusty, are not aligned with each other, have no nets and some of the net fixings are missing. The community wish to replace them with bigger goalposts that are properly in line to allow games to happen. There will be new nets and a line marker to more clearly define to pitch from the rest of the park.

**Input from Community Engagement Manager:**

This project has been requested by young people from the area themselves. It

meets many priorities about allowing exercise and enjoyment of open spaces. Devizes Town Council supports this project and the ongoing maintenance of the posts

**Proposal**

That the Area Board determines the application from Avon Road Community for £804.95

**Youth Funding**

Application ID	Applicant	Project Proposal	Requested
<a href="#">891</a>	Wiltshire Youth for Christ	New youth worker for Devizes area	£5,000.00

**Project Description:**

With continued challenges facing young people on returning to school and coming out of lockdown, Wiltshire Youth for Christ is committed to supporting them with youth workers who are able to engage, inspire and equip a younger generation. They are committed to not only delivering youth work provision during this challenging season but also for the long term so that teenagers can see and have a stronger foundation in their mental physical and emotional health to reach their potential.

**Input from Community Engagement Manager:**

Young people need lots of support at this time. This project will help to provide that away from school, when clubs, groups and other places where that support might come from are closed.

**Proposal**

That the Area Board determines the application from Wiltshire Youth for Christ for £5,000.00

Application ID	Applicant	Project Proposal	Requested
<a href="#">912</a>	The Bridge Project	Thrive Hub Worker in two Devizes Schools	£5,000.00

**Project Description:**

The Bridge Youth Project have employed a Thrive Hub worker to work across four primary schools supporting Year 5 and 6 children through high quality, early intervention, transition work and pastoral care. Two of these 4 schools are based in Devizes: Southbroom St James and the Trinity CE Academy, where our worker will base himself for one full day a week every week starting next month. The Bridge Youth Project is also applying to Calne and Royal Wootton Bassett & Cricklade Area Boards for funding.

**Input from Community Engagement Manager:**

This post will provide important early intervention work to support pupils and their families and help them progress through primary school and during the important transition to secondary school.

**Proposal**

That the Area Board determines the application from The Bridge Project for £5,000.00

Application ID	Applicant	Project Proposal	Requested
<a href="#">916</a>	Potterne Youth Club	Potterne Community Garden Re-Generation	£2,700.00

**Project Description:**

To come out of Lockdown in a Covid manageable way the BBC Points West Gardeners World Community Garden is an ideal open-air project. The Garden is a prestigious area of community value neglected due to Covid restriction. The youth club will take on the project to regenerate bringing education, recreation, leisure, wellbeing, social integration all into an environmentally beneficial way. The ideal project to follow the road map into the post-Covid era.

**Input from Community Engagement Manager:**

Potterne Youth Club has been unable to operate since March 2020. This outdoor project is an ideal way to bring young people back to the centre, get them involved in community work and help revitalise this community space.

**Proposal**

That the Area Board determines the application from Potterne Youth Club for £2,700.00

Application ID	Applicant	Project Proposal	Requested
<a href="#">4193</a>	Area Board Initiative – Devizes School	Supporting students returning to school.	£4,700.00

**Project Description:**

Outside educational space: this could have a huge impact on both the engagement in school and the mental and physical health of many of our young people.  
 Recreational seating areas: young people have had extended periods where they have not been able to socialise with their friends. The physical constraints of the "bubble" system in school means that their ability to sit and simply chat with friends is limited.

**Input from Community Engagement Manager:**



This project will support young people to be back at school. It will help them to socialise with the friends they have not seen and take time away from the formal classroom setting.

**Proposal**

That the Area Board determines the Area Board Initiative for Devizes School for £4,700.00

Application ID	Applicant	Project Proposal	Requested
<a href="#">4194</a>	Area Board Initiative – Lavington School	Supporting students returning to school.	£4,700.00

**Project Description:**

An event with Wiltshire Outdoor Learning – where students would have experiences and activities to promote resilience, trust, and boost self-esteem. With students faced with isolation and being behind screens for so long, this will also boost their wellbeing by being physical and away from screens.

**Input from Community Engagement Manager:**

This project will support young people to be back at school. It will help them to socialise with the friends they have not seen and take time away from the formal classroom setting.

**Proposal**

That the Area Board determines the Area Board Initiative for Lavington School for £4,700.00

**Health and Wellbeing Funding**

Application ID	Applicant	Project Proposal	Requested
<a href="#">4151</a>	Wiltshire Wildlife Trust	Natural Connections	£899.00

**Project Description:**

Natural Connections: Nature-Based Wellbeing Programme for Older Adults, a 6-week pilot project. It will pilot taking nature indoors to older adults living with loneliness and isolation throughout the Covid-19 pandemic. The project will work with 8-12 older adults who are experiencing loneliness and social isolation e.g. those that live alone or who are carers.

**Input from Community Engagement Manager:**

This project will help to support local people experiencing isolation and loneliness due to the pandemic.

**Proposal**

That the Area Board determines the application from Wiltshire Wildlife Trust for £899.00

--

Application ID	Applicant	Project Proposal	Requested
<a href="#">4160</a>	Care Home Volunteers	Recruiting new volunteers	£456.50
<p><b>Project Description:</b> This project is to recruit, train and support more volunteers in the Devizes area to provide more one-to-one-befriending visits to older residents in care homes relieving loneliness and bringing smiles and laughter. This funding would allow them to carry out a leaflet drop in the town particularly to find volunteers to visit residents at the new Coate Water Care home Avebury House where they are keen to work with us.</p> <p><b>Input from Community Engagement Manager:</b> This project will help to support local people living in residential settings and experiencing isolation and loneliness due to the pandemic.</p>			
<p><b>Proposal</b> That the Area Board determines the application from Care Home Volunteers for £456.50</p>			

Application ID	Applicant	Project Proposal	Requested
<a href="#">4162</a>	Wiltshire Service Users' Network	Devizes Walking Buddy Scheme	£900.00
<p><b>Project Description:</b> To provide a walking buddy companion for people with long term conditions, mental health experiences and older people. It will work with people on a 1 to 1 basis who have long term conditions, mental health experiences or and who are older people. The buddies' role is to provide reassurance, encourage and accompany people on a local walk on a regular basis increasing their physical activity and reducing isolation. This will lead to both increased physical and mental wellbeing.</p> <p><b>Input from Community Engagement Manager:</b> This project will help to support local people experiencing isolation and loneliness due to the pandemic.</p>			
<p><b>Proposal</b> That the Area Board determines the application from Wiltshire Service Users' Network for £900.00</p>			

Application ID	Applicant	Project Proposal	Requested
<a href="#">4168</a>	Alzheimer's Support	Sidmouth St. Day Centre	£900.00
<p><b>Project Description:</b> This project seeks support for the Day Club situated at 5 Sidmouth Street. This is one of three day clubs run by Alzheimer's Support with the other two based in Warminster and Trowbridge.</p>			



The Day Clubs are for local people living with dementia and their family carers. The Club provides a warm stimulating and friendly environment. Since opening in 2008 it has built up strong links with the community. Members enjoy a wide range of activities often with the Clubs iPad. While there is a wide choice of small group activities Club members are also very welcome to do their own thing. The garden has won its category of Devizes in Bloom and graded Outstanding by the RHS.

**Input from Community Engagement Manager:**

This project will help to support local people experiencing isolation and loneliness due to the pandemic.

**Proposal**

That the Area Board determines the application from Alzheimer's Support for £900.00

No unpublished documents have been relied upon in the preparation of this report

**Report Author:**

Andrew Jack  
Community Engagement Manager  
01225 713109  
[andrew.jack@wiltshire.gov.uk](mailto:andrew.jack@wiltshire.gov.uk)

